

**Suffolk Estuarine SSSIs –
Assessment of Changes in Extent of
Saltmarsh Over the Period
1999/2000 to 2006/2007**

VOLUME 2 - MAPS

Report to Natural England

Institute of Estuarine and
Coastal Studies
University of Hull

15 October 2011

Institute of Estuarine & Coastal Studies
(IECS)
The University of Hull
Cottingham Road
Hull
HU6 7RX
UK

Tel: +44 (0)1482 464120
Fax: +44 (0)1482 464130

E-mail:
iecs@hull.ac.uk

Web site:
<http://www.hull.ac.uk/iecs>

Author(s): S Boyes & S Thomson

Report: YBB155-F-2010



Institute of Estuarine & Coastal Studies (IECS)

Natural England

**Suffolk Estuarine SSSIs –
Assessment of Changes in
Extent of Saltmarsh Over the
Period 1999/2000 to
2006/2007**

VOLUME 2 - MAPS

15 October 2011

Reference No: YBB155-F-2010

For and on behalf of the Institute of Estuarine and Coastal Studies	
Approved by:	_____
Signed:	_____
Position:	_____
Date:	_____

This report has been prepared by the Institute of Estuarine and Coastal Studies, with all reasonable care, skill and attention to detail as set within the terms of the Contract with the client.

We disclaim any responsibility to the client and others in respect of any matters outside the scope of the above.

This is a confidential report to the client and we accept no responsibility of whatsoever nature to third parties to whom this report, or any part thereof, is made known. Any such parties rely on the report at their own risk.


Printed on 100% recycled paper 

TABLE OF CONTENTS

TABLE OF CONTENTS	i
1. MAPS	1

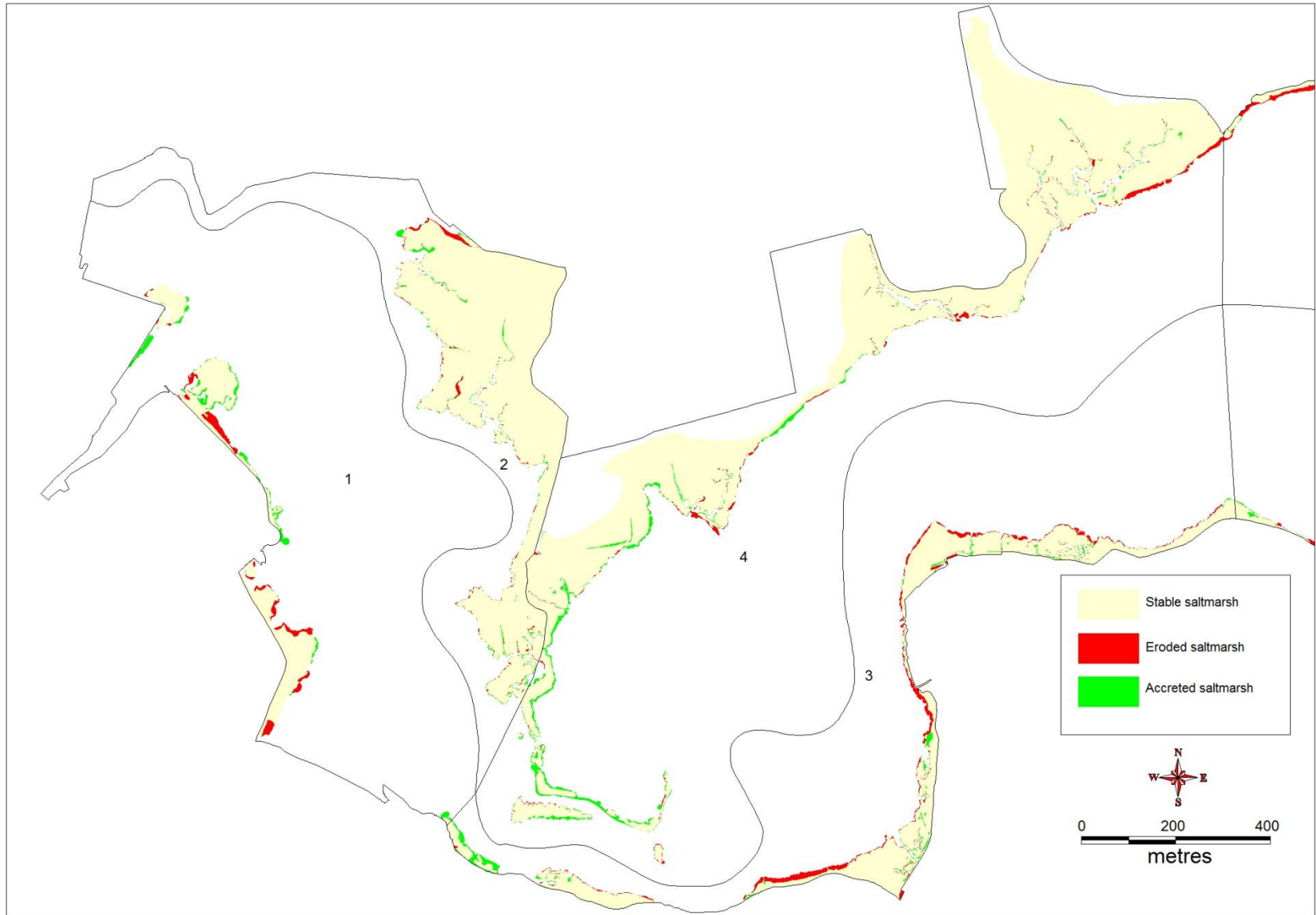
1. MAPS

Section 1 of this Volume (pages 2-33) shows the saltmarsh change within each of the management units chosen for assessment by Natural England within the four estuarine SSSIs. The A4 maps detail the extent of saltmarsh losses and gains within each Management Unit for each SSSI. Losses are shown in red, gains in green and stable saltmarsh shown in yellow.

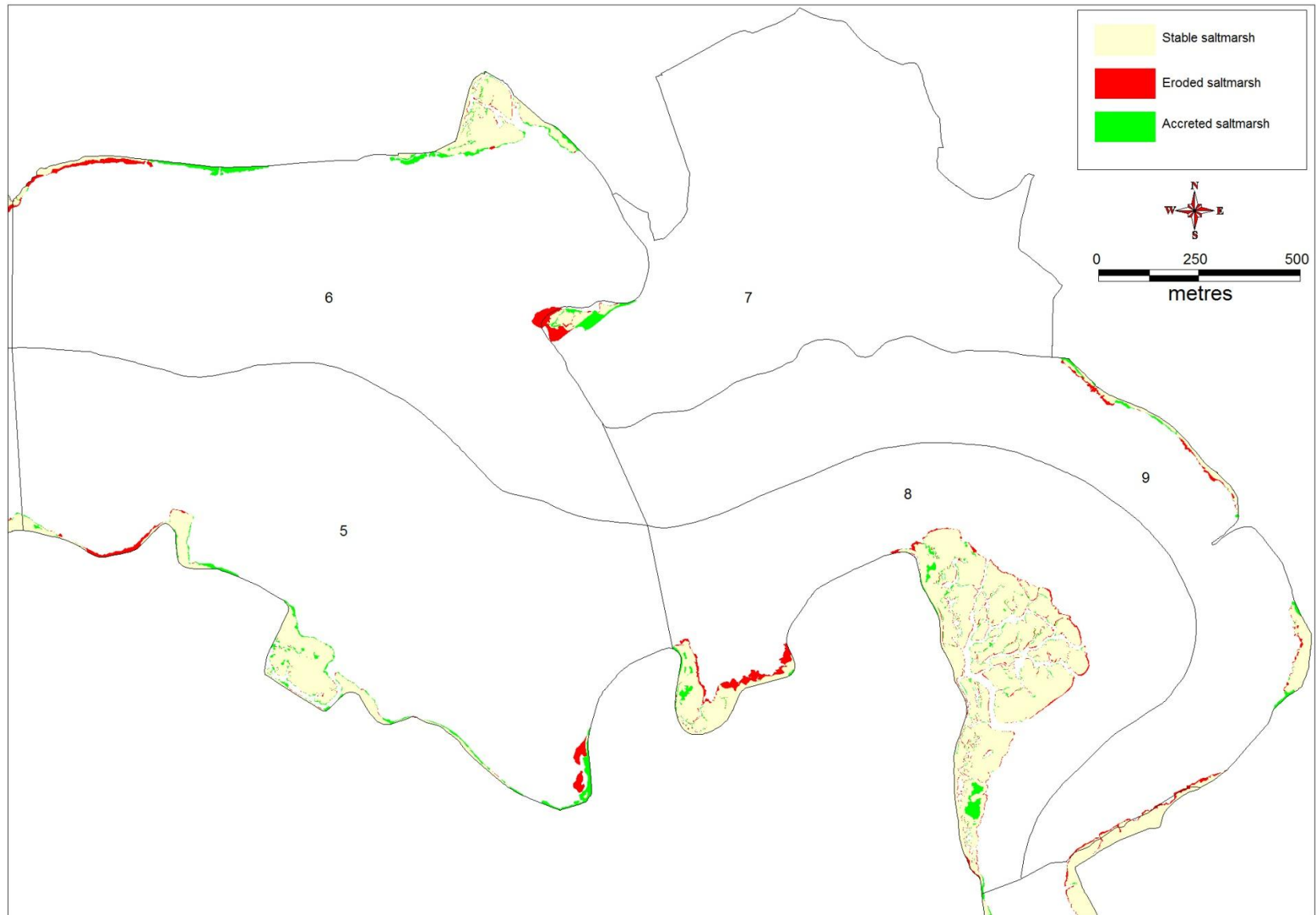
Section 2 (pages 34-37) shows the overall saltmarsh change within each of the four estuarine SSSIs. The A3 maps detail the extent of saltmarsh losses and gains within each Management Unit for each SSSI, with losses shown in red, gains in green and stable saltmarsh shown in yellow.



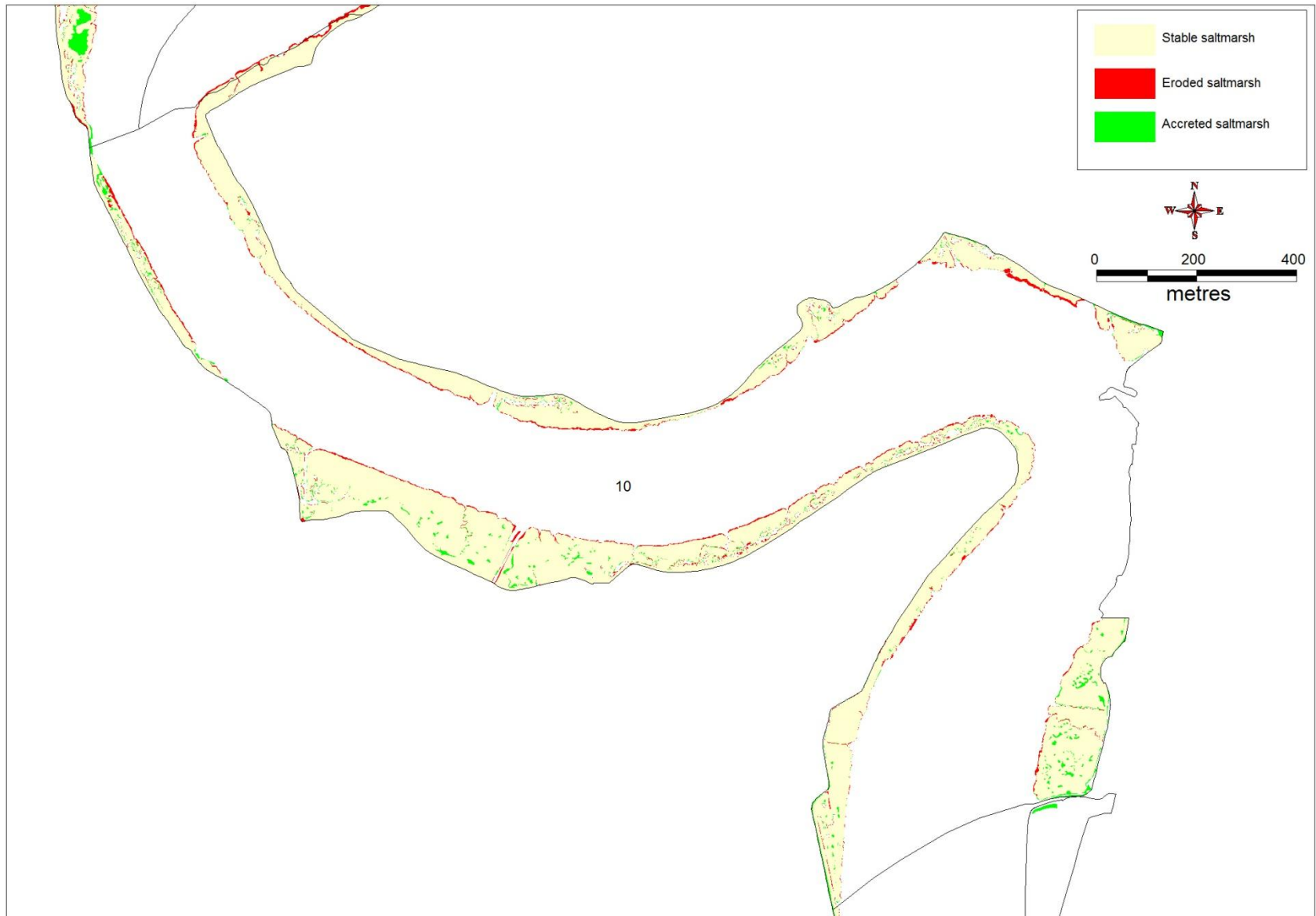
Map 1 Alde-Ore Estuary SSSI. Location of Management Units



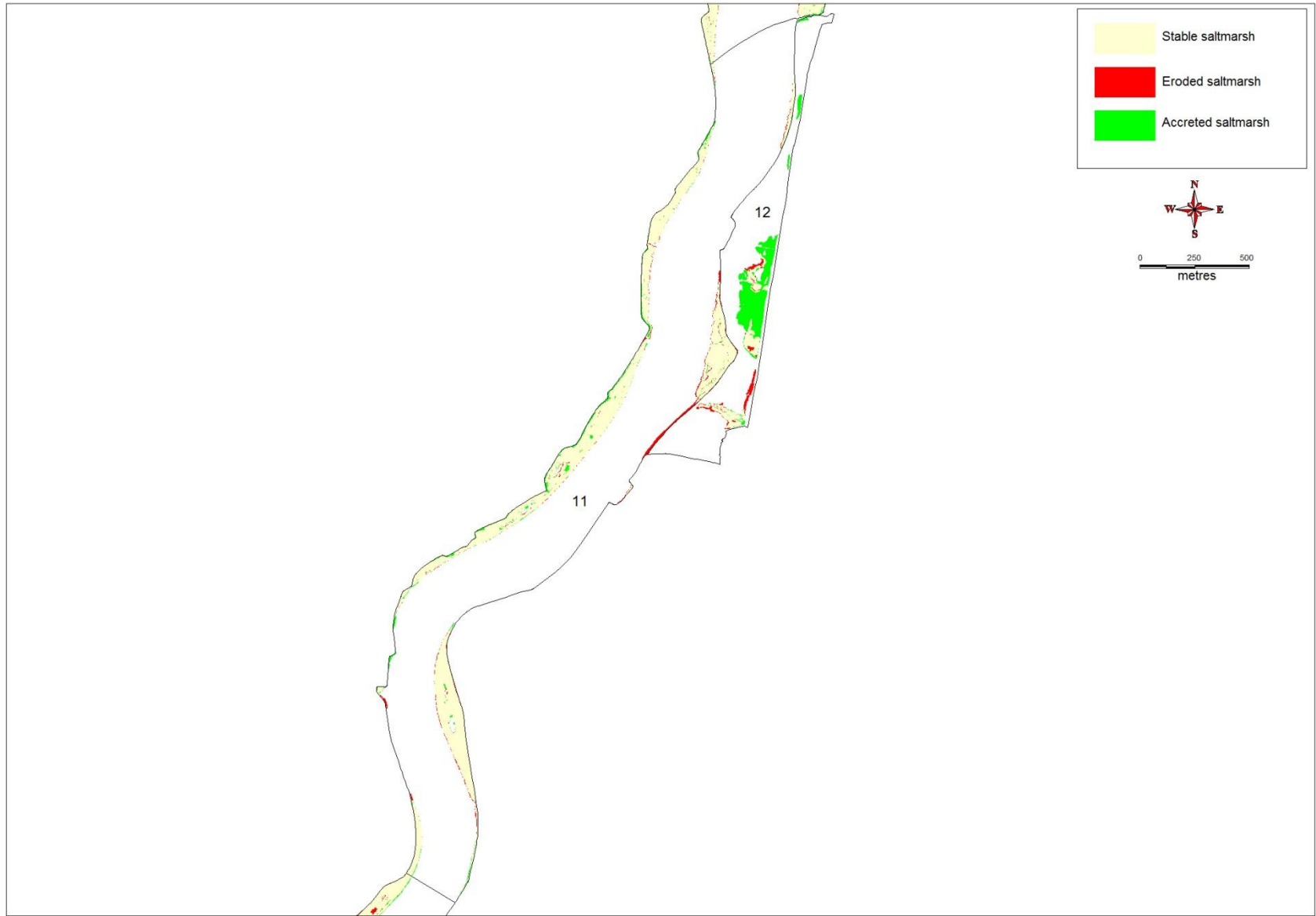
Map 2 – Units 1, 2, 3 and 4 on the Alde-Ore SSSI



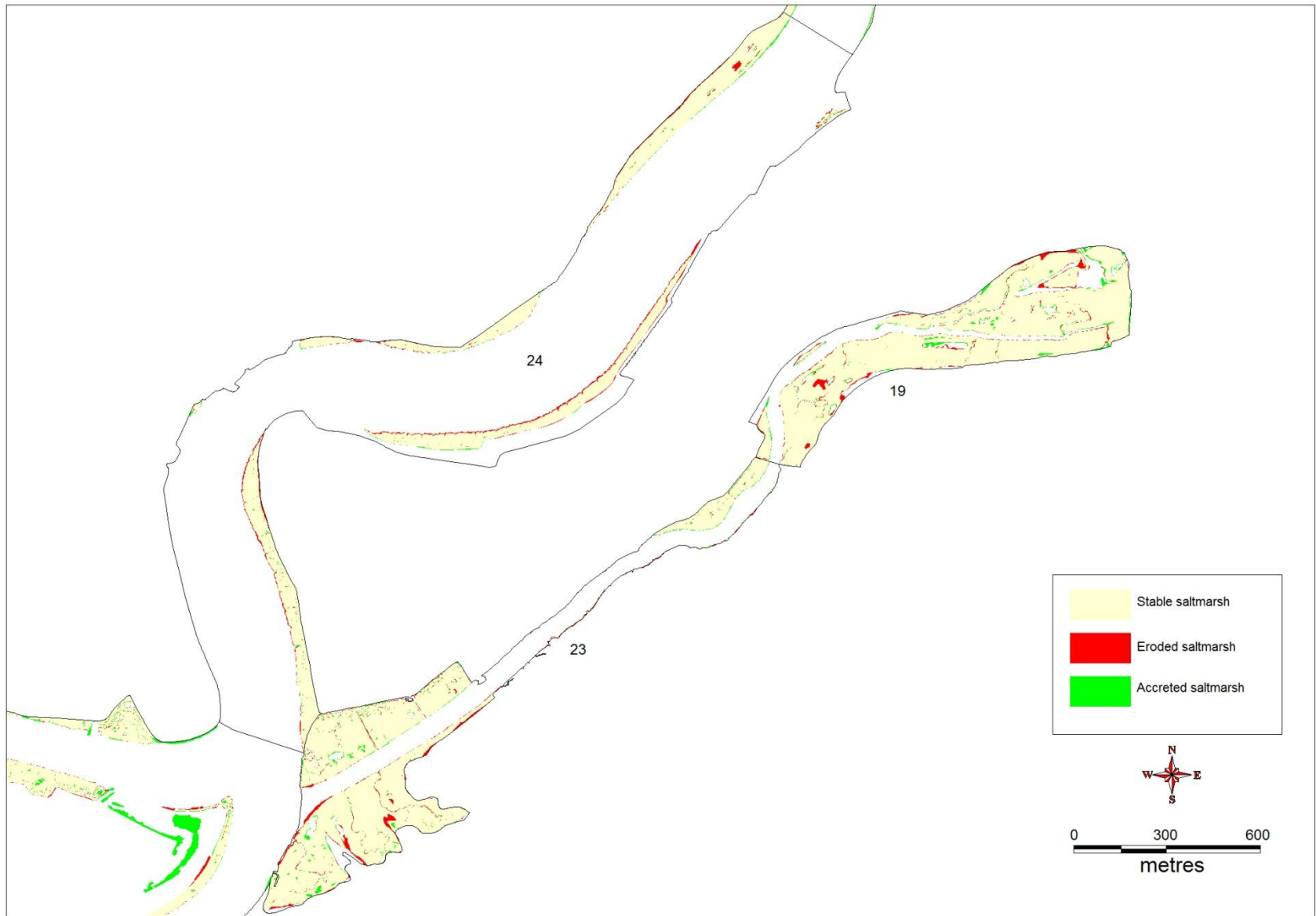
Map 3 – Units 5, 6, 7, 8 and 9 on the Alde-Ore SSSI



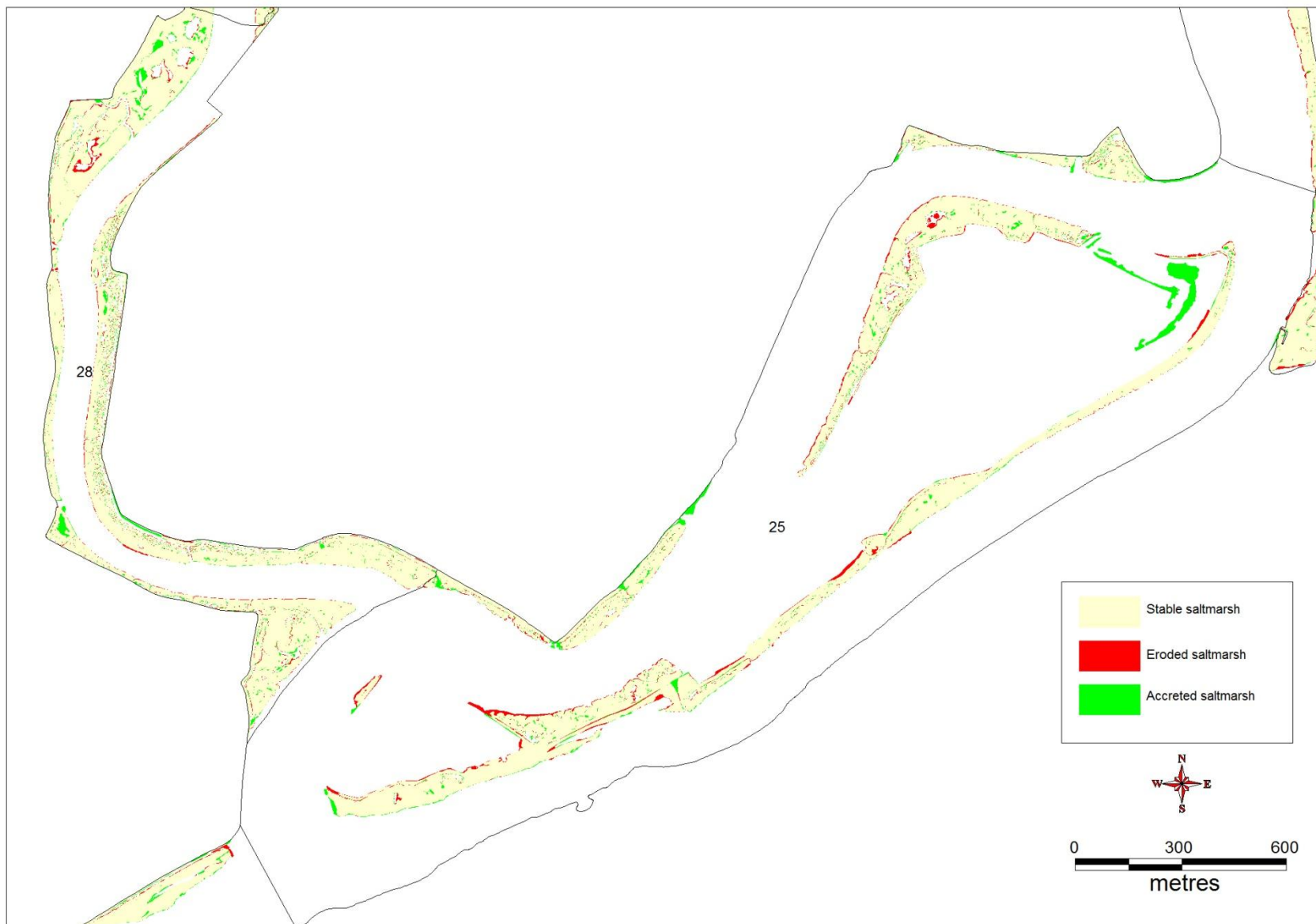
Map 4 – Unit 10 on the Alde-Ore SSSI



Map 5 - Units 11 and 12 on the Alde-Ore SSSI



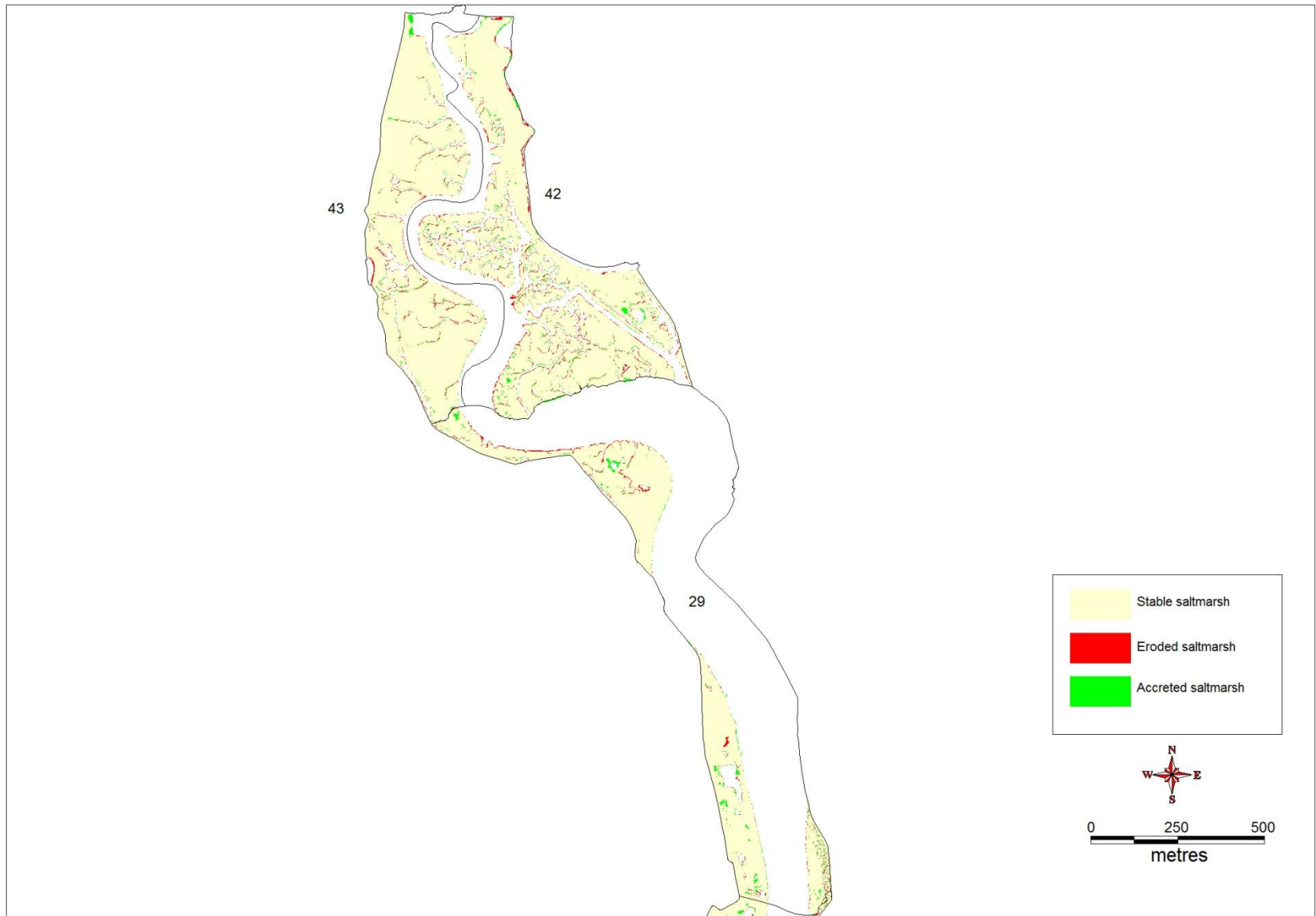
Map 6 – Units 19, 23 and 24 on the Alde-Ore SSSI



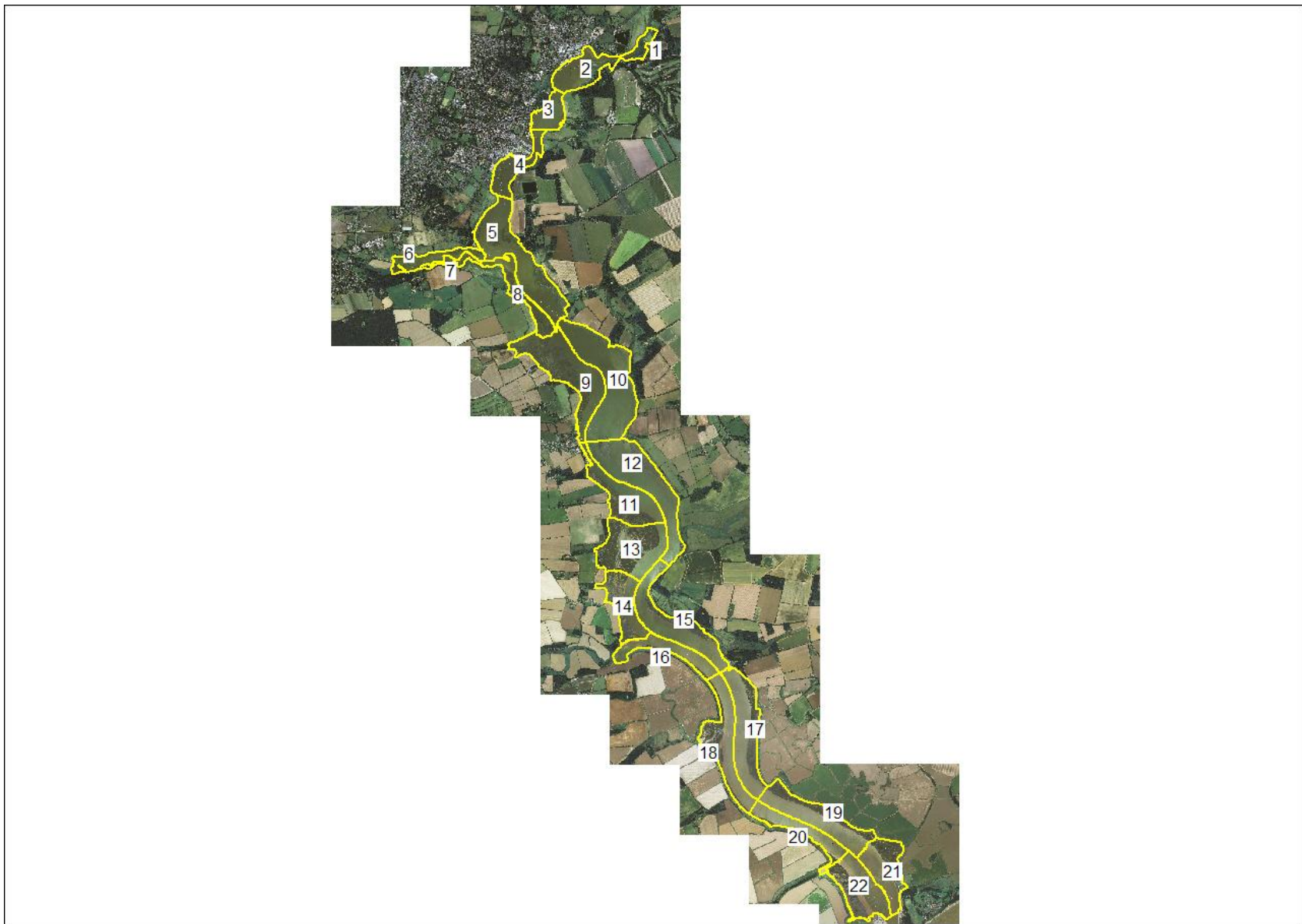
Map 7 – Units 25 and 28 on the Alde-Ore SSSI



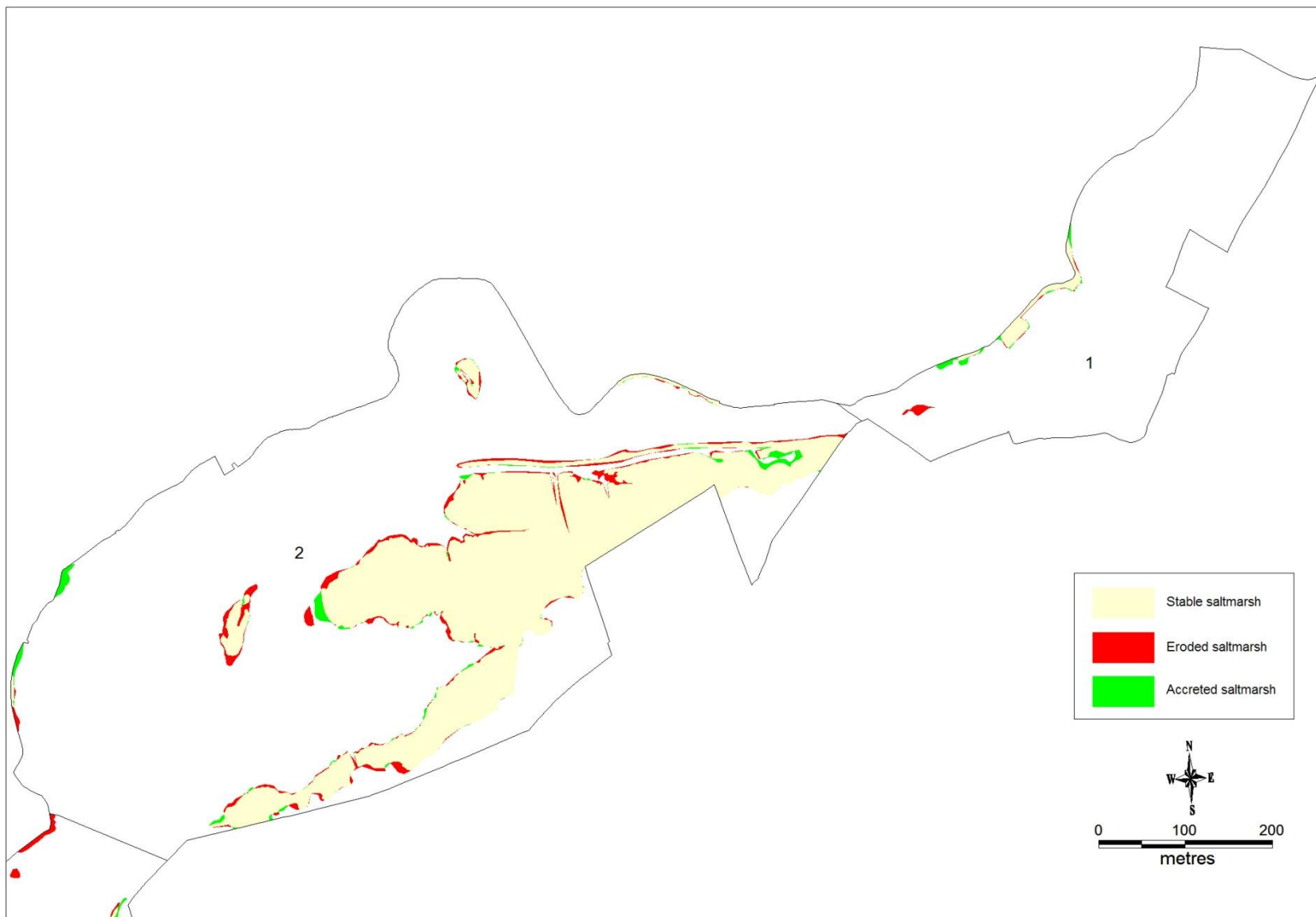
Map 8 – Unit 31 on the Alde-Ore SSSI



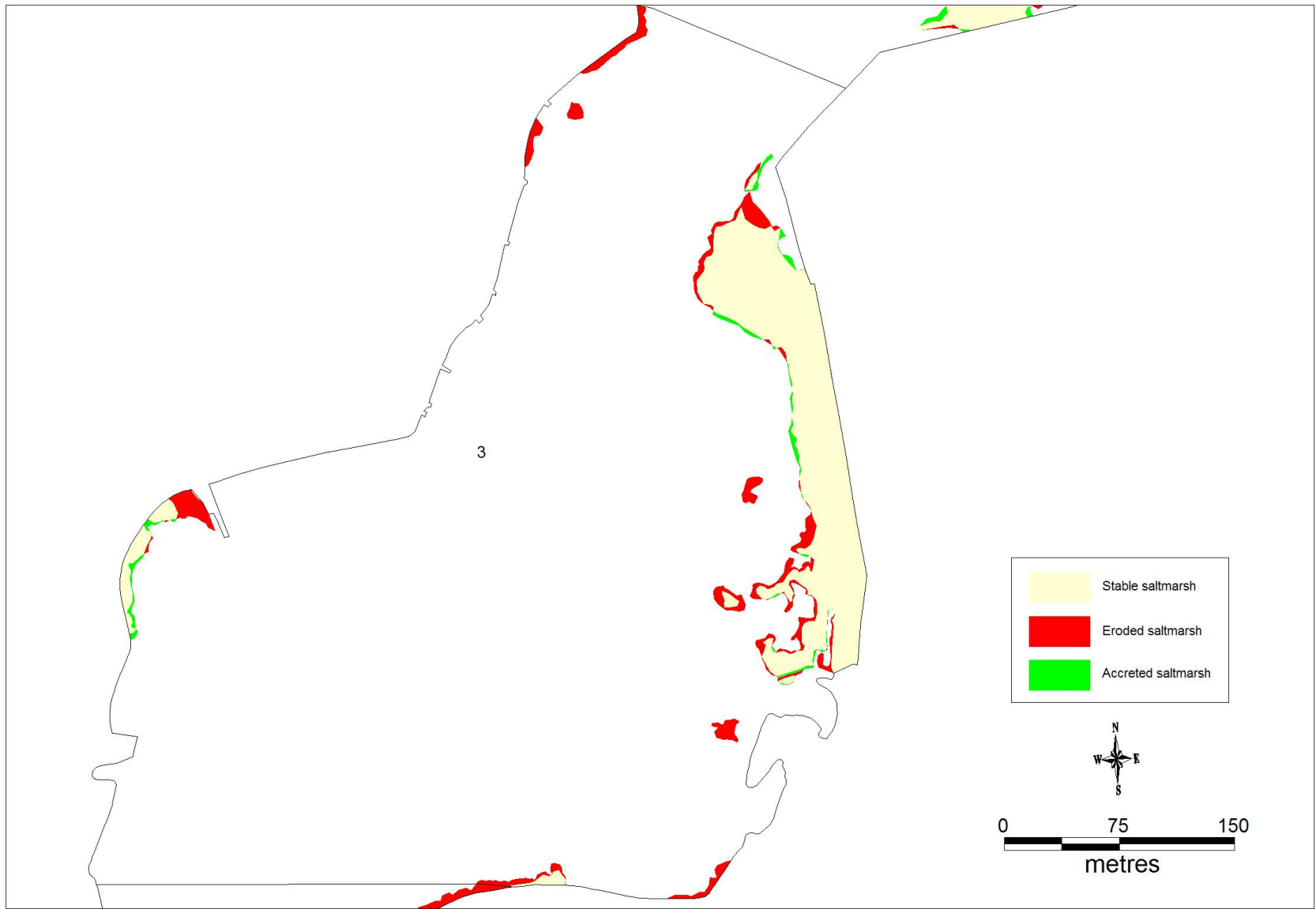
Map 9 – Units 29, 42 and 43 on the Alde-Ore SSSI



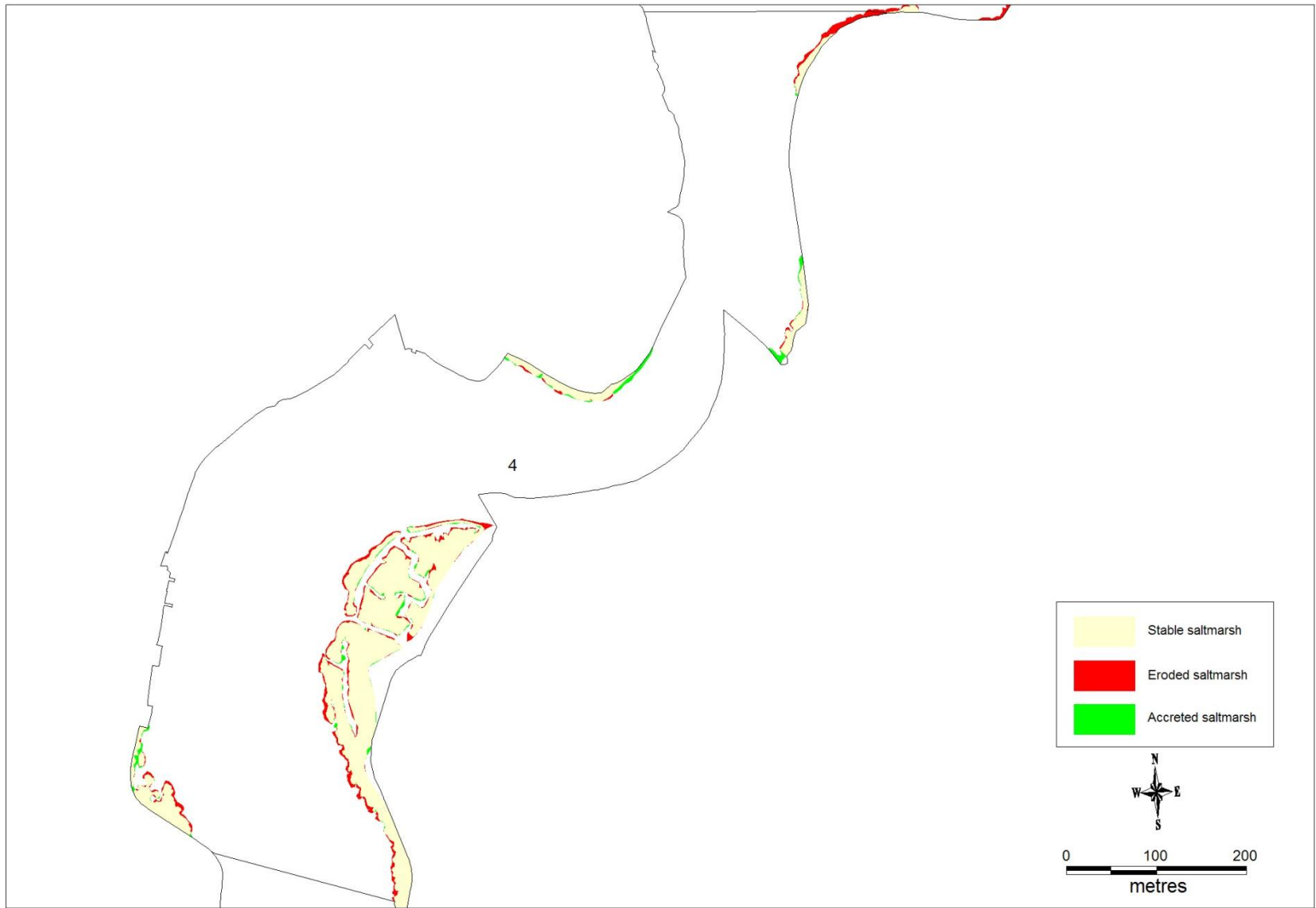
Map 10 Deben Estuary SSSI. Location of Management Units



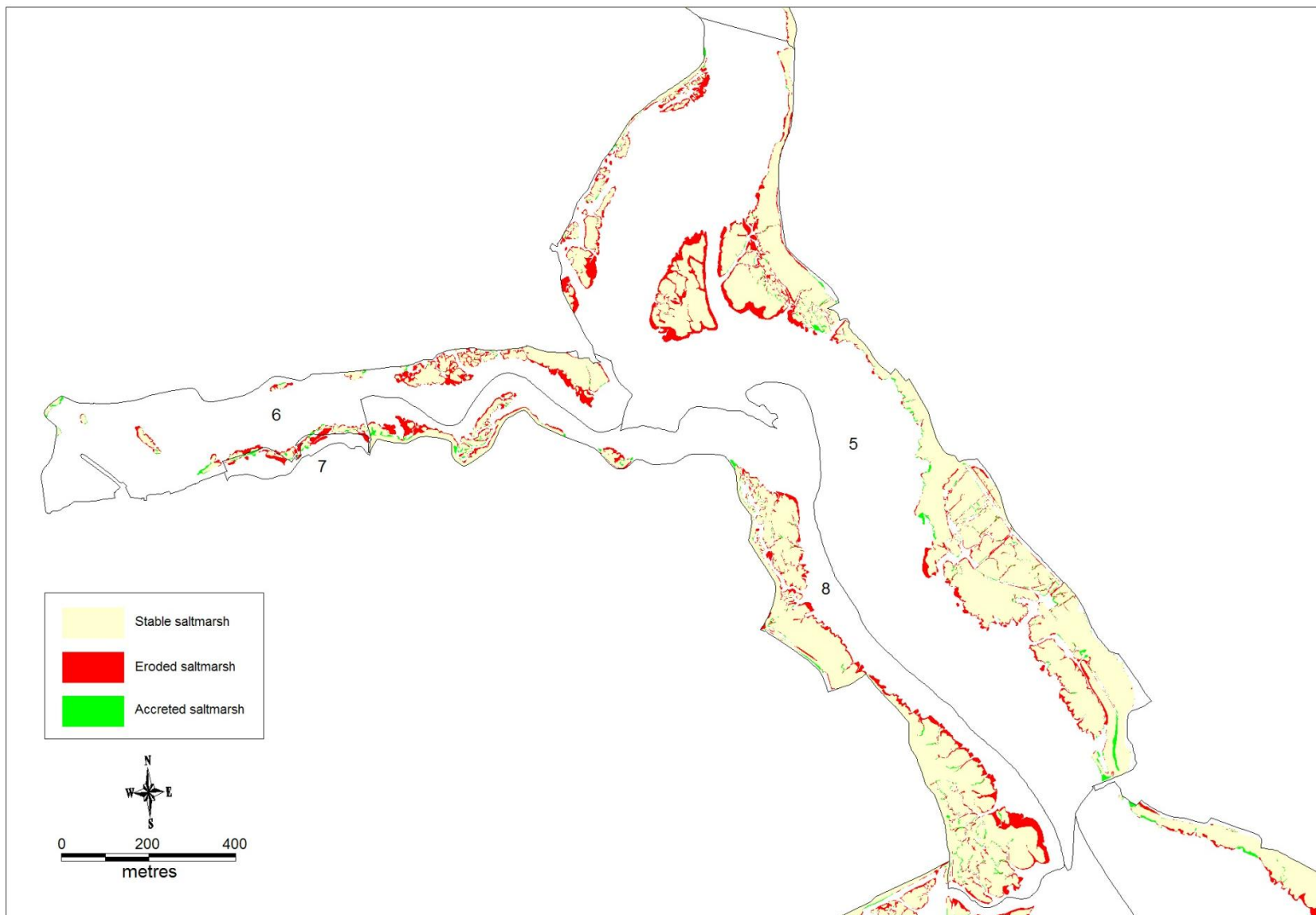
Map 11 – Units 1 and 2 on the Deben SSSI



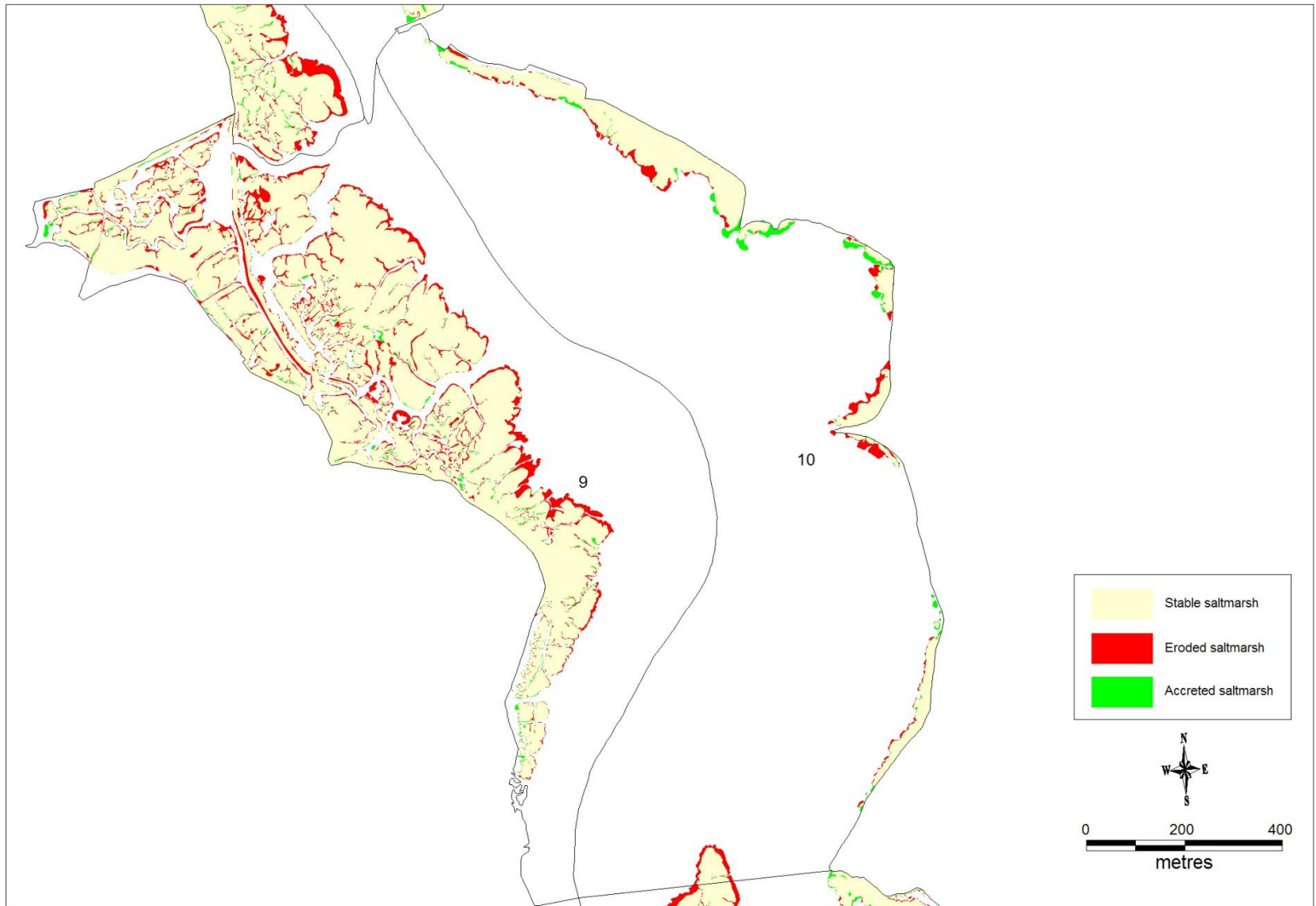
Map 12 – Unit 3 on the Deben SSSI



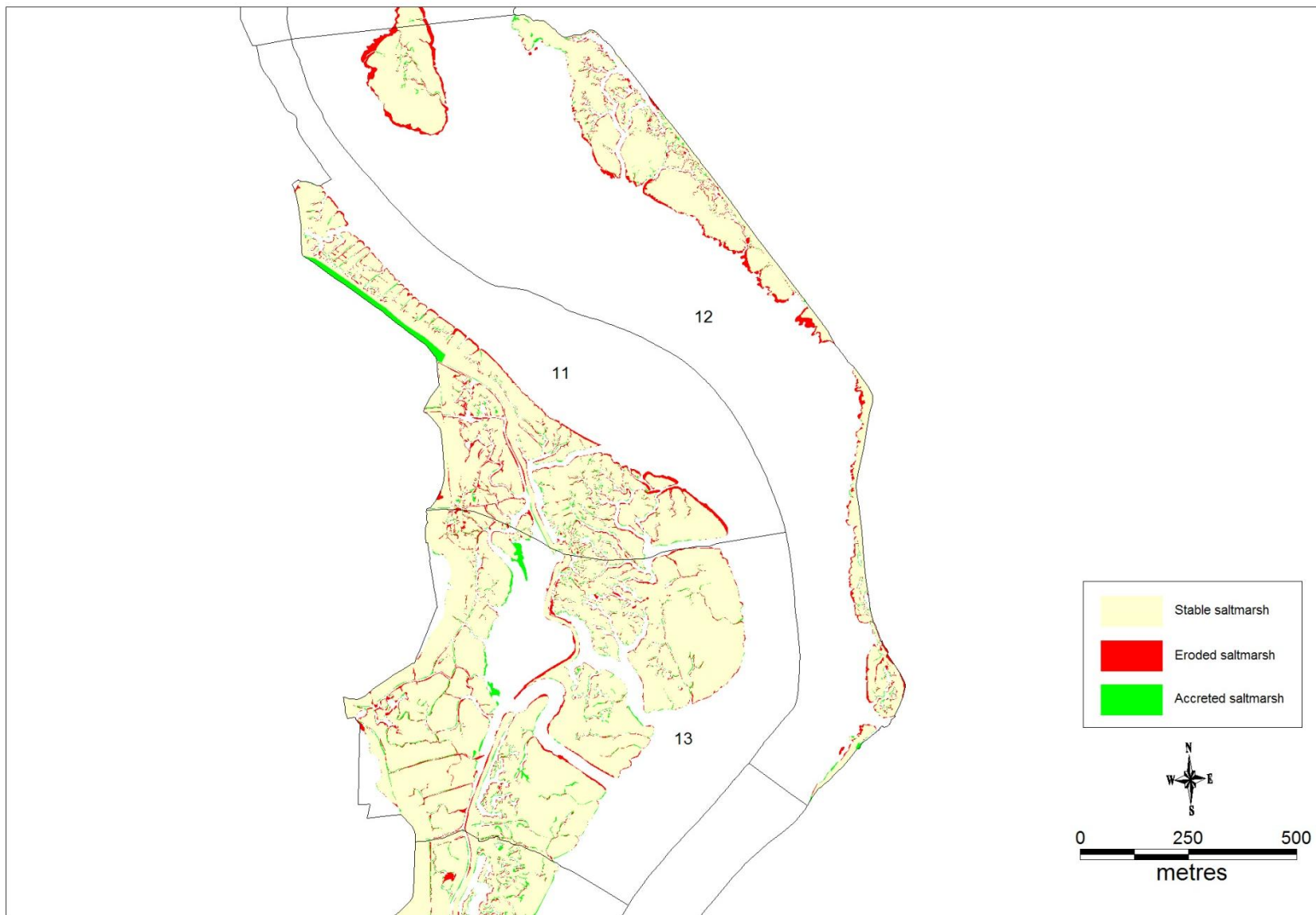
Map 13 – Unit 4 on the Deben SSSI



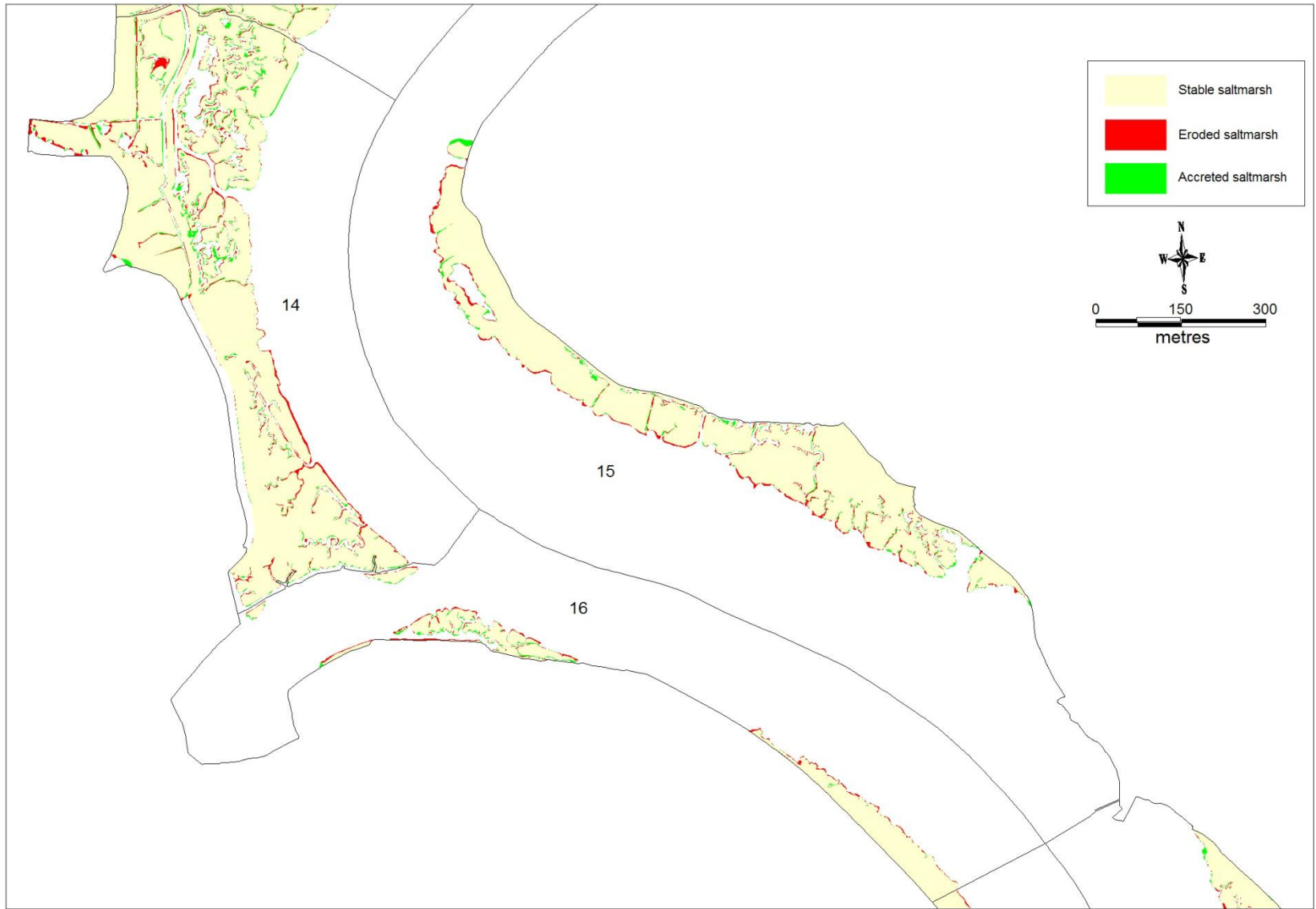
Map 14 – Units 5, 6, 7 and 8 on the Deben SSSI



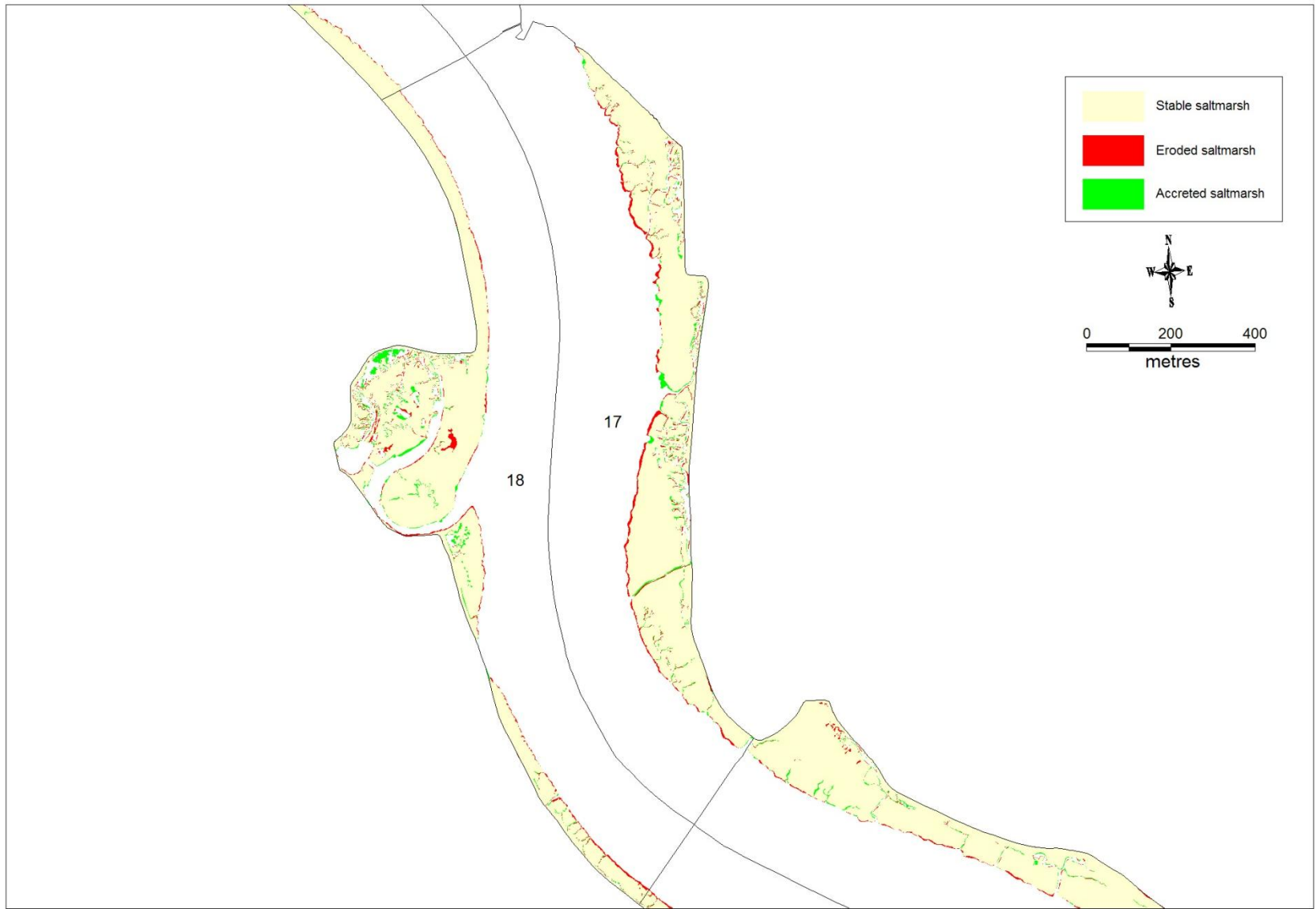
Map 15 – Units 9 and 10 on the Deben SSSI



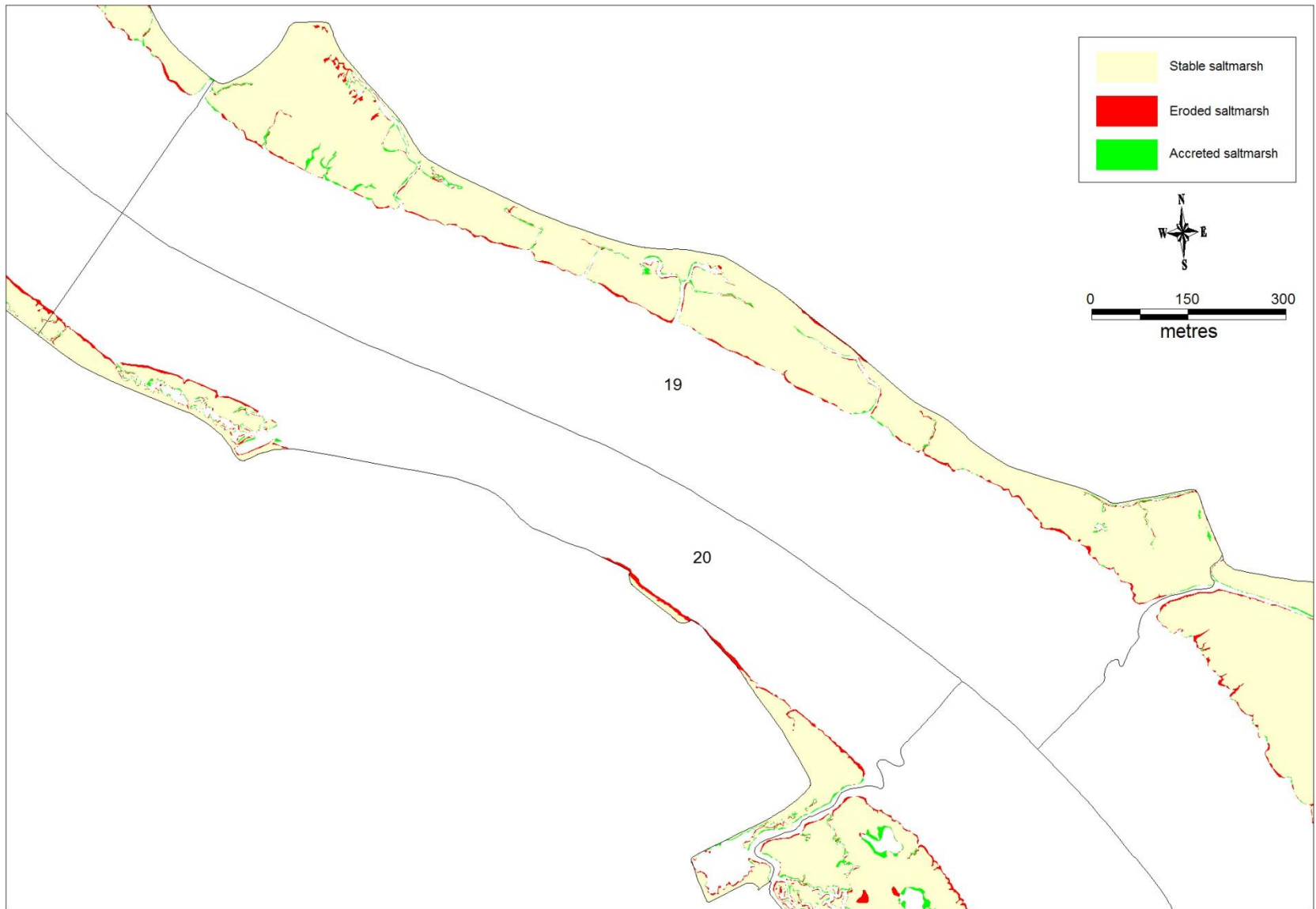
Map 16 – Units 11, 12 and 13 on the Deben SSSI



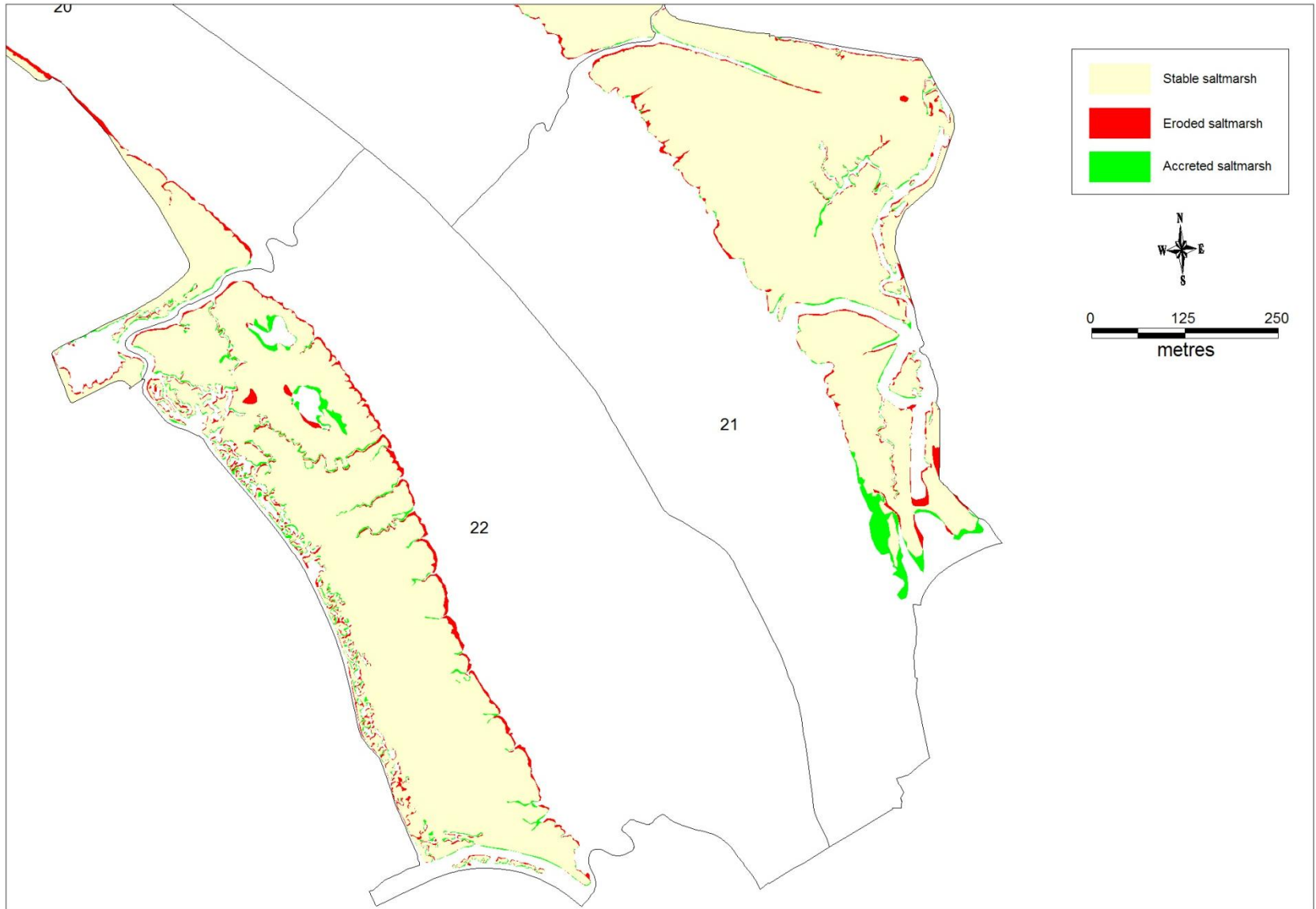
Map 17 – Units 14, 15 and 16 on the Deben SSSI



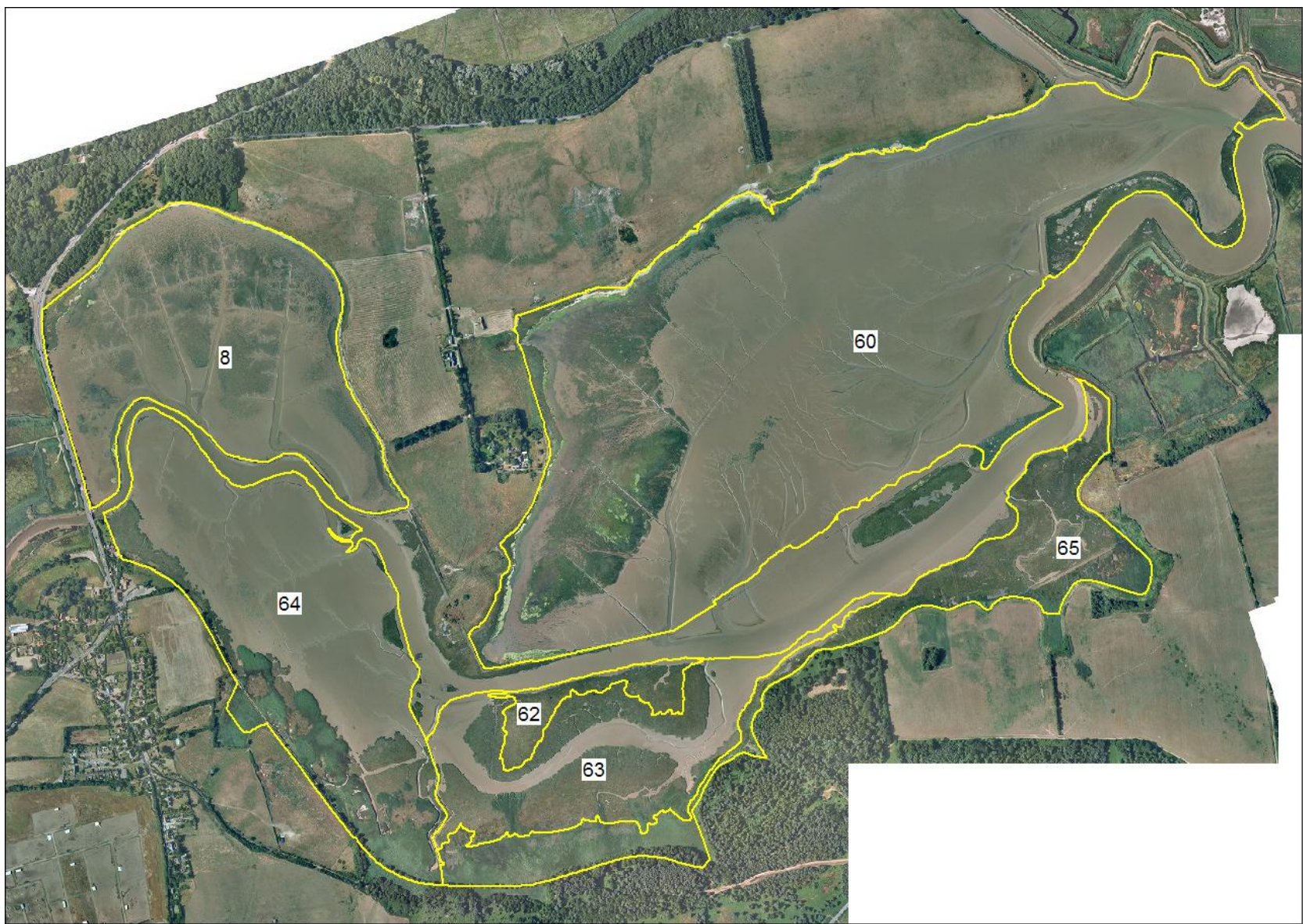
Map 18 – Units 17 and 18 on the Deben SSSI



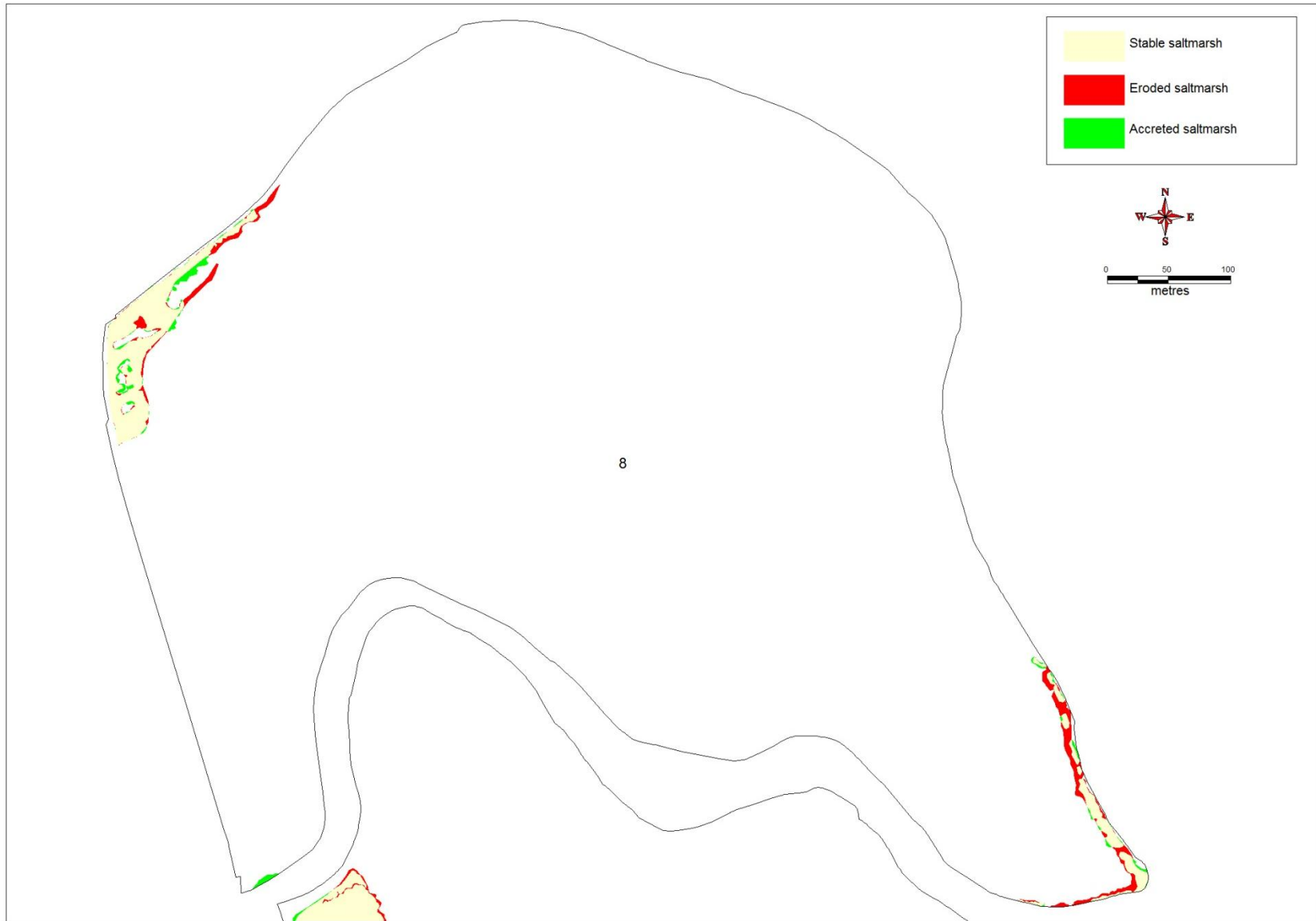
Map 19 – Units 19 and 20 on the Deben SSSI



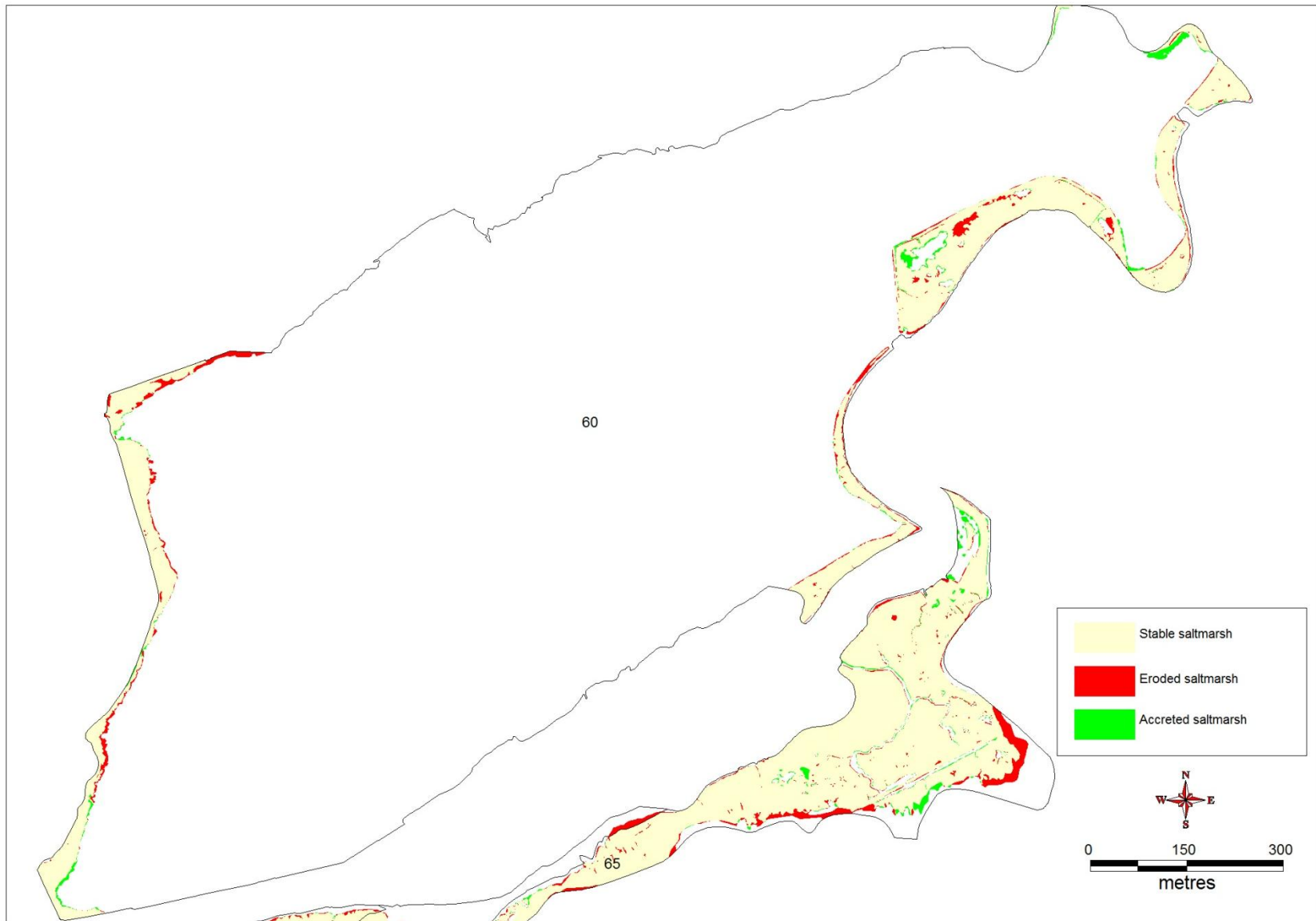
Map 20 – Units 21 & 22 on the Deben SSSI



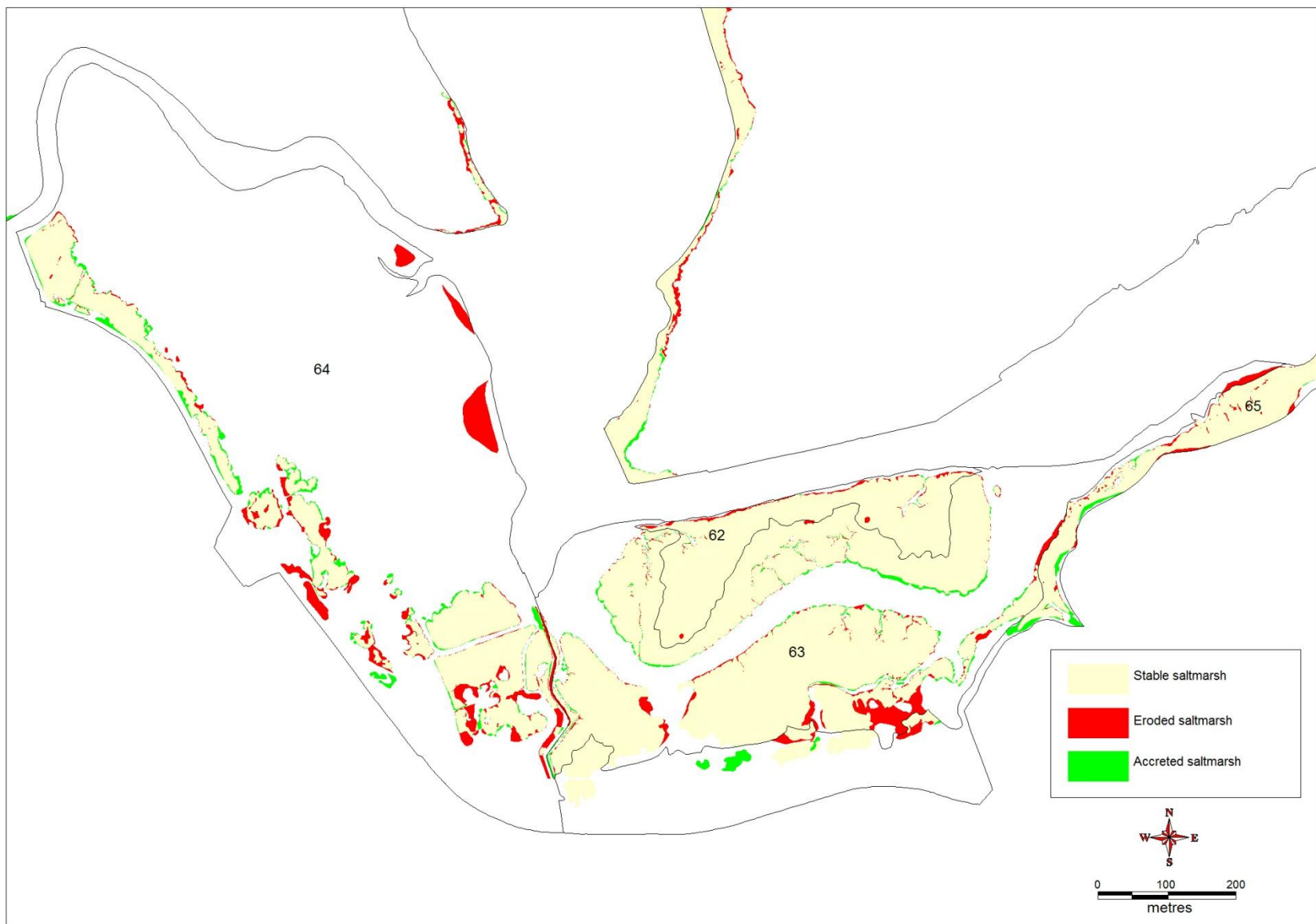
Map 21 Minsmere-Walberswick Heaths and Marshes SSSI. Location of Management Units



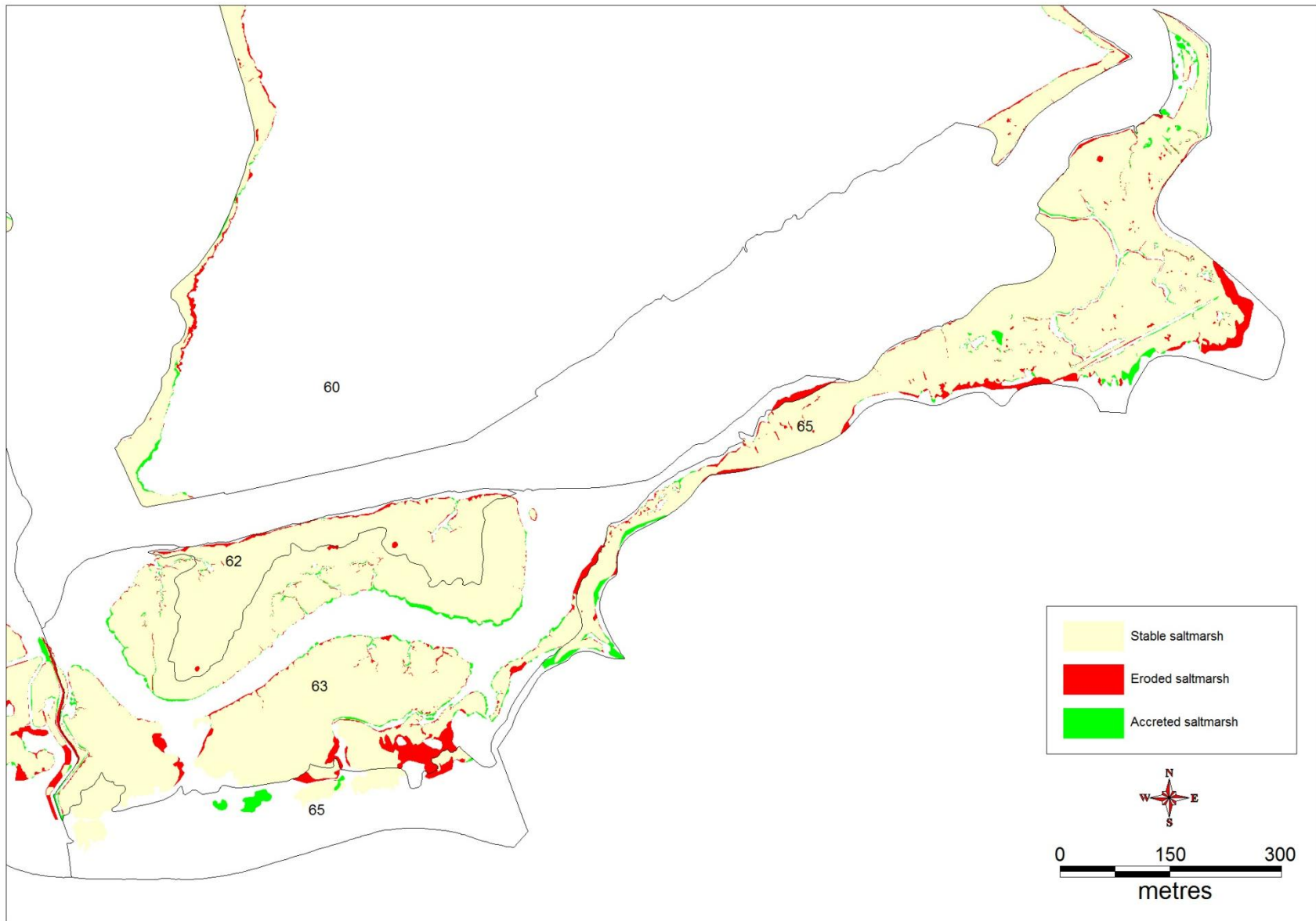
Map 22 – Unit 8 on the Minsmere-Walberswick Heaths and Marshes SSSI



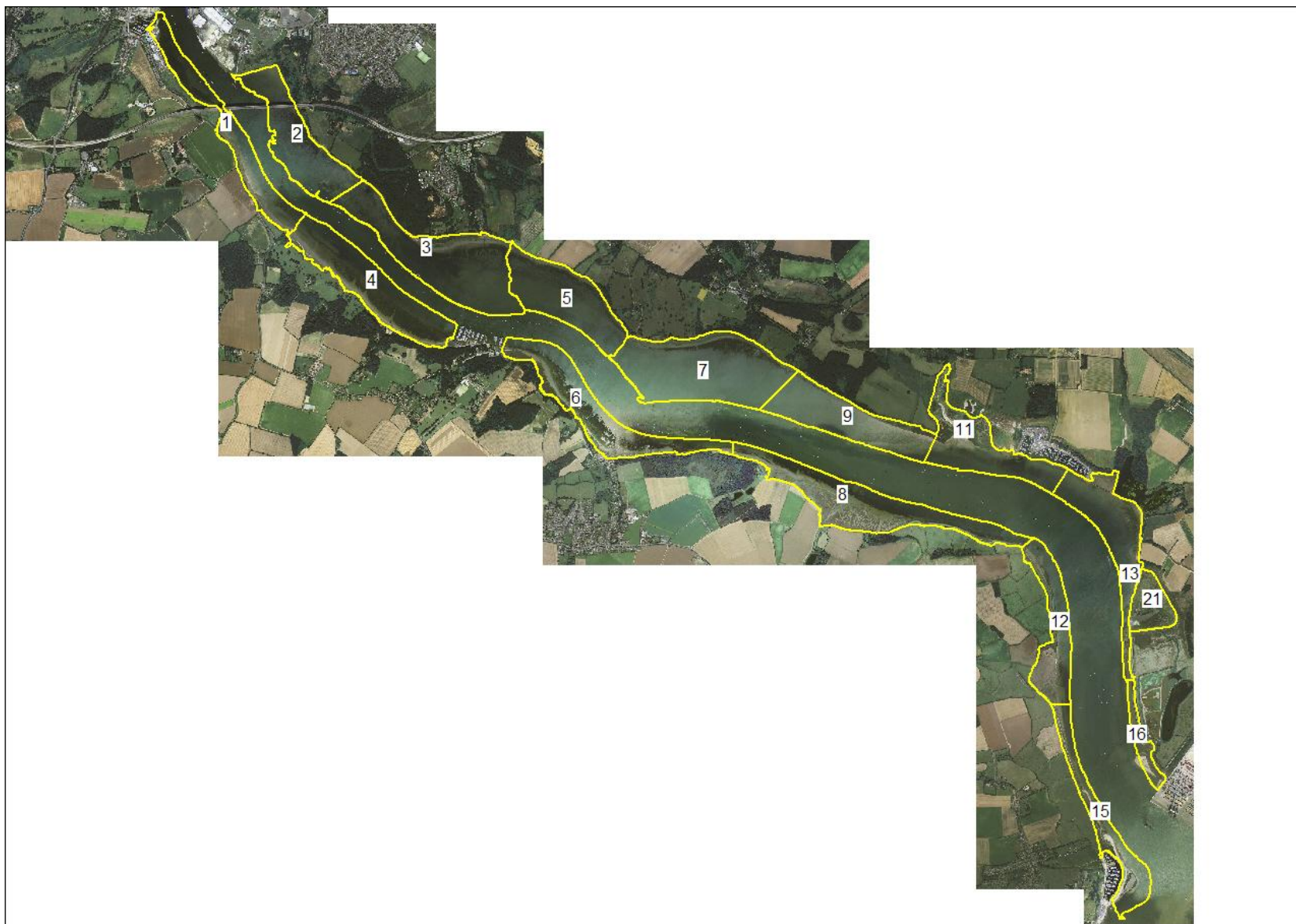
Map 23 – Unit 60 on the Minsmere-Walberswick Heaths and Marshes SSSI



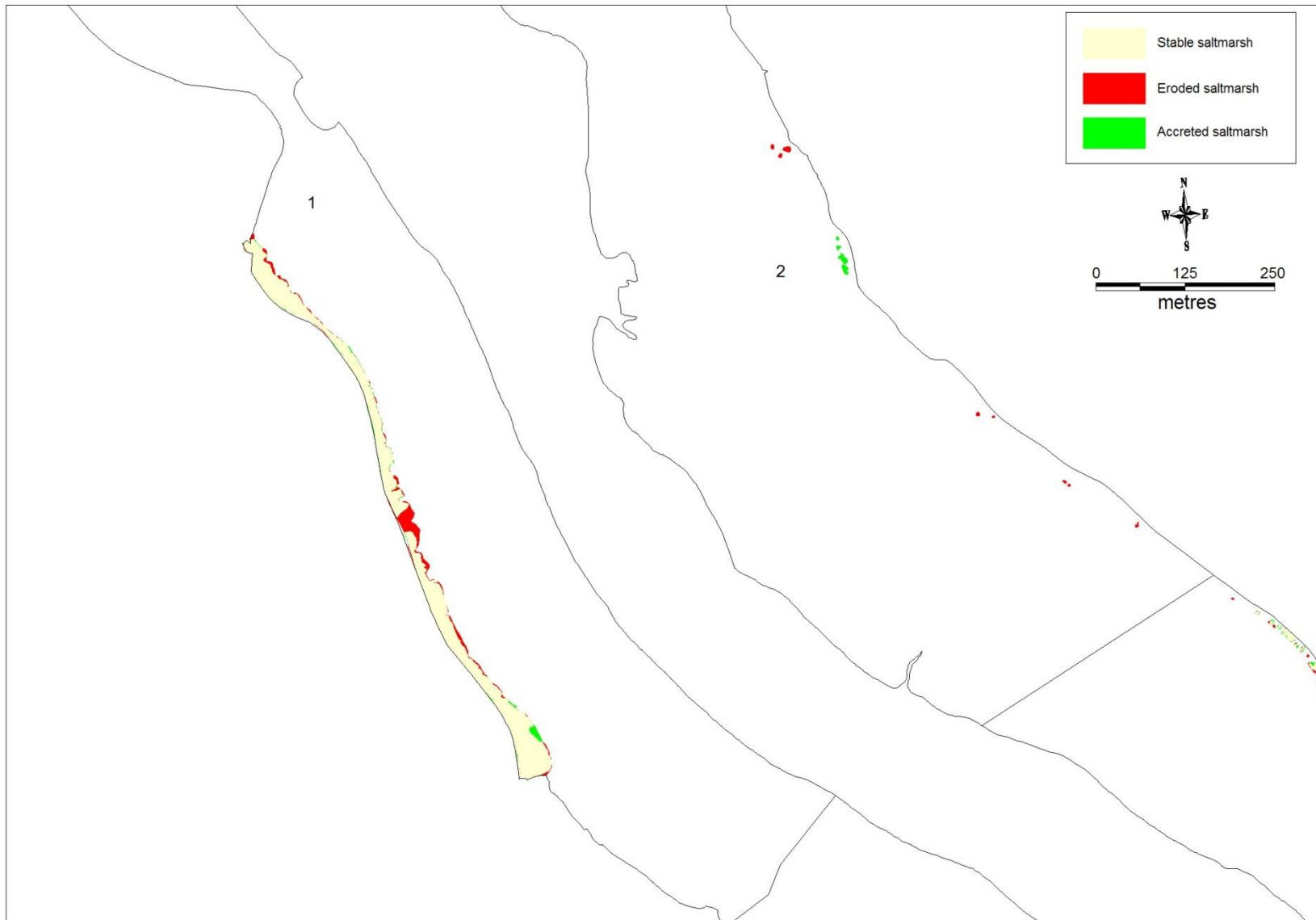
Map 24 – Units 62, 63 & 64 on the Minsmere-Walberswick Heaths and Marshes SSSI



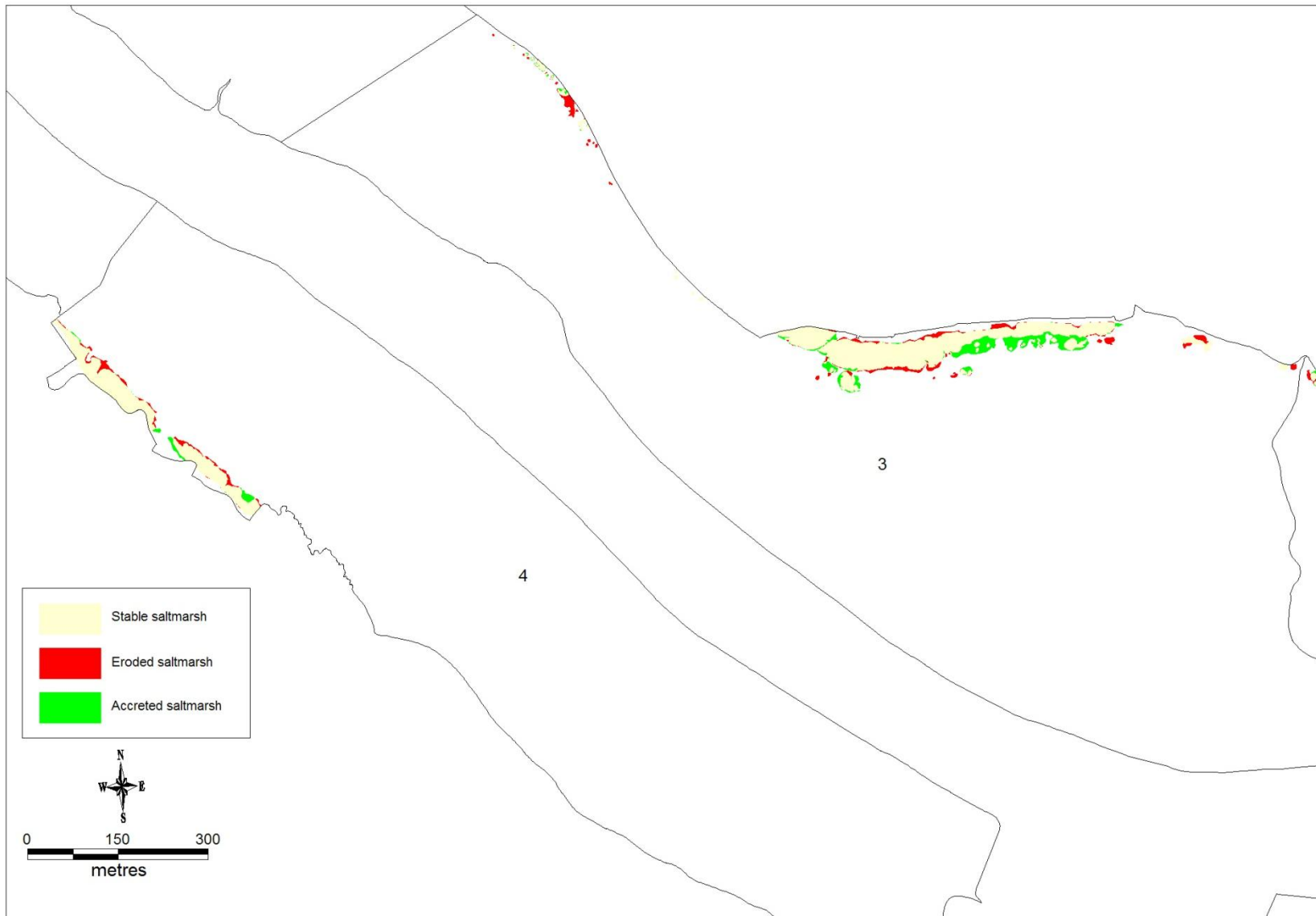
Map 25 – Unit 65 on the Minsmere-Walberswick Heaths and Marshes SSSI



Map 26 Orwell Estuary SSSI. Location of Management Units



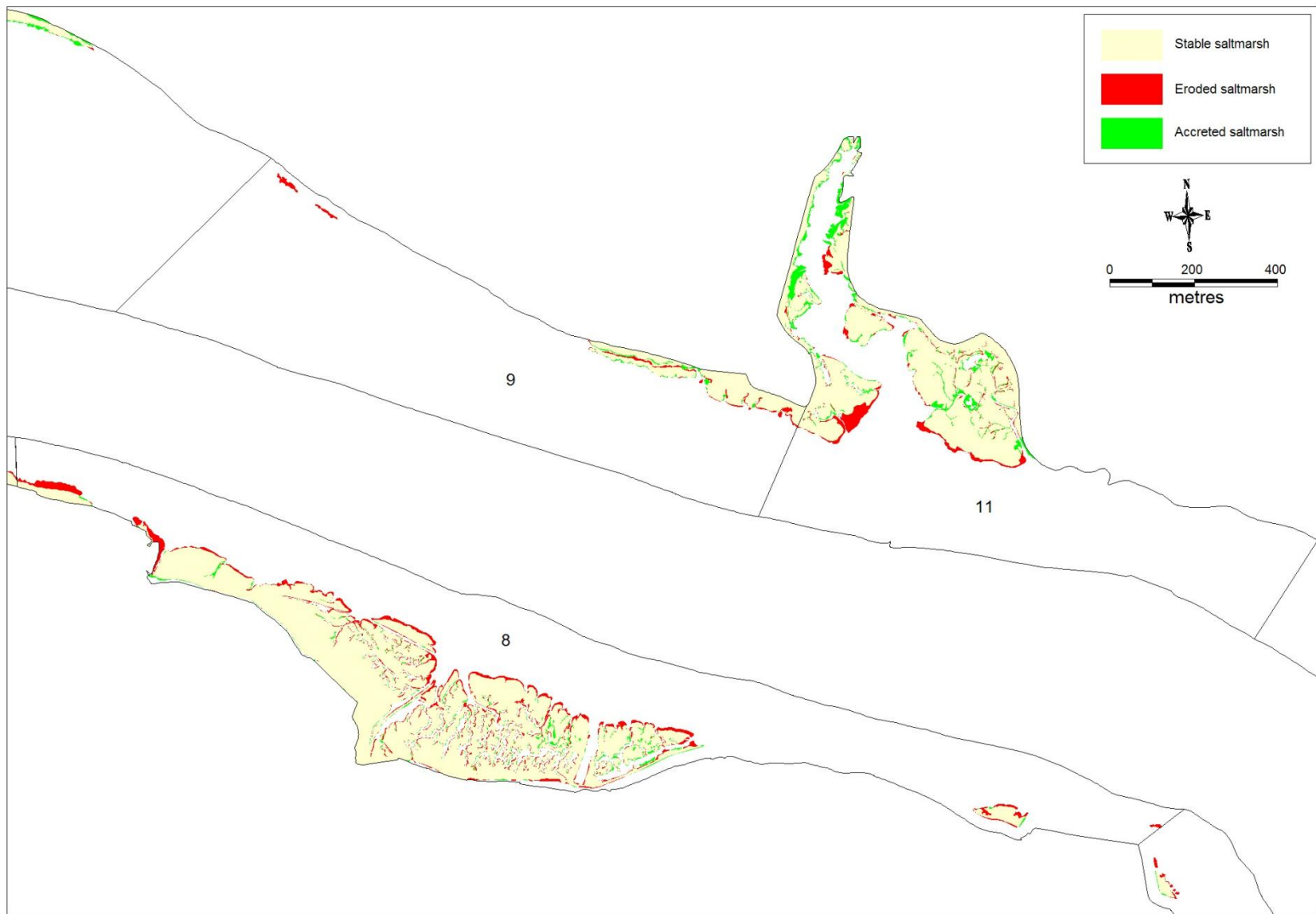
Map 27 – Units 1 and 2 on the Orwell SSSI



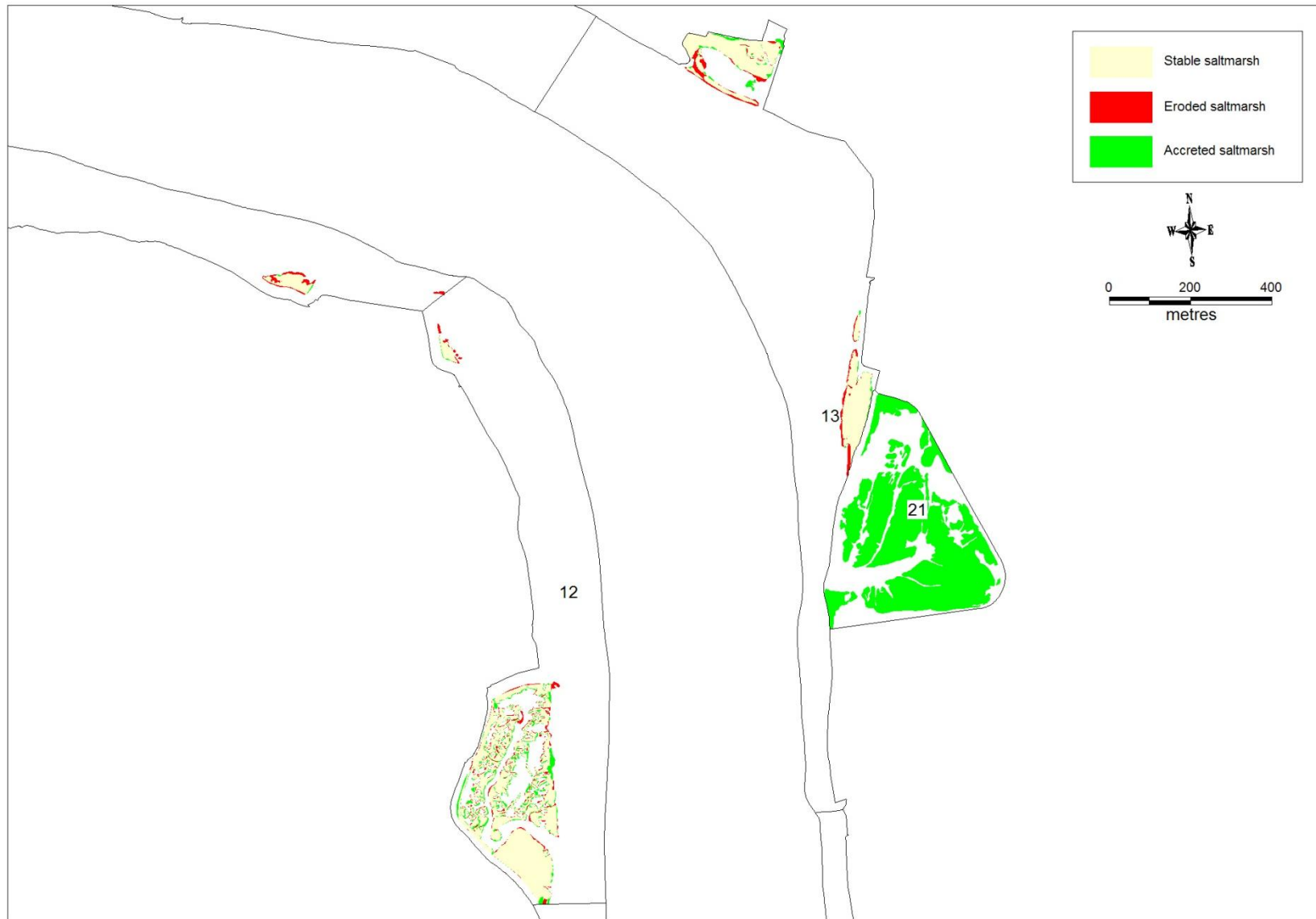
Map 28 – Units 3 and 4 on the Orwell SSSI



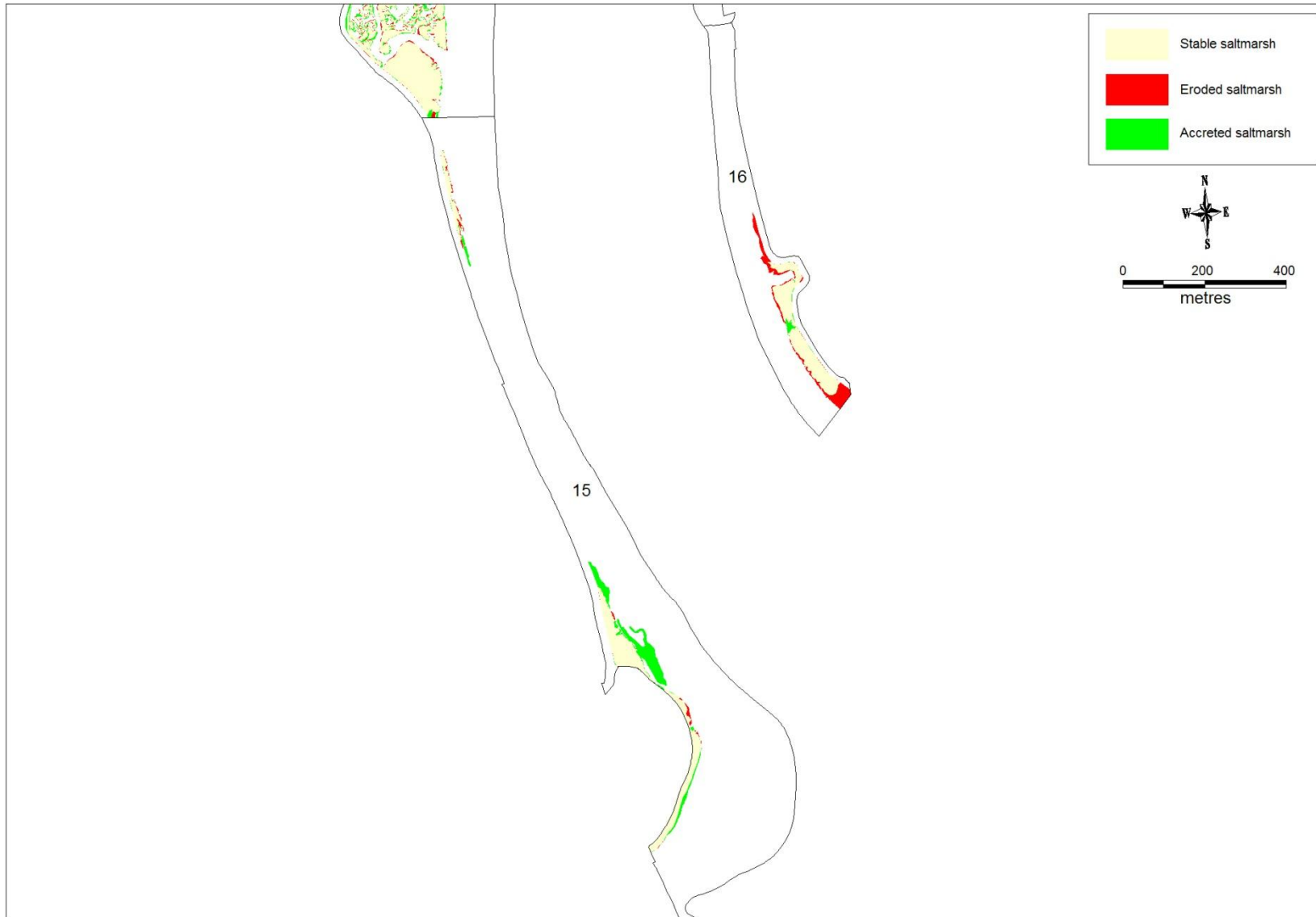
Map 29 – Units 5, 6 & 7 on the Orwell SSSI



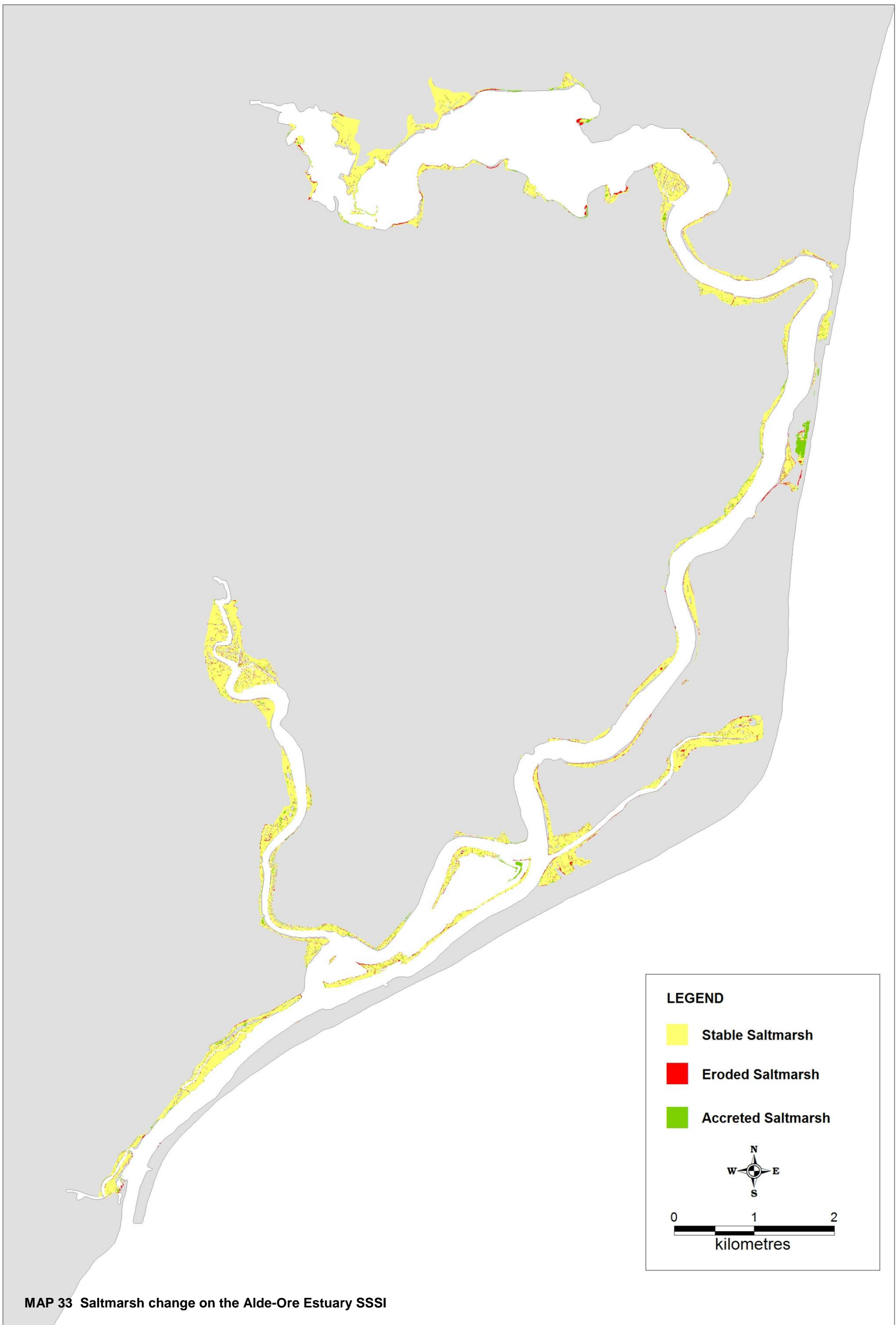
Map 30 – Units 8, 9 & 11 on the Orwell SSSI

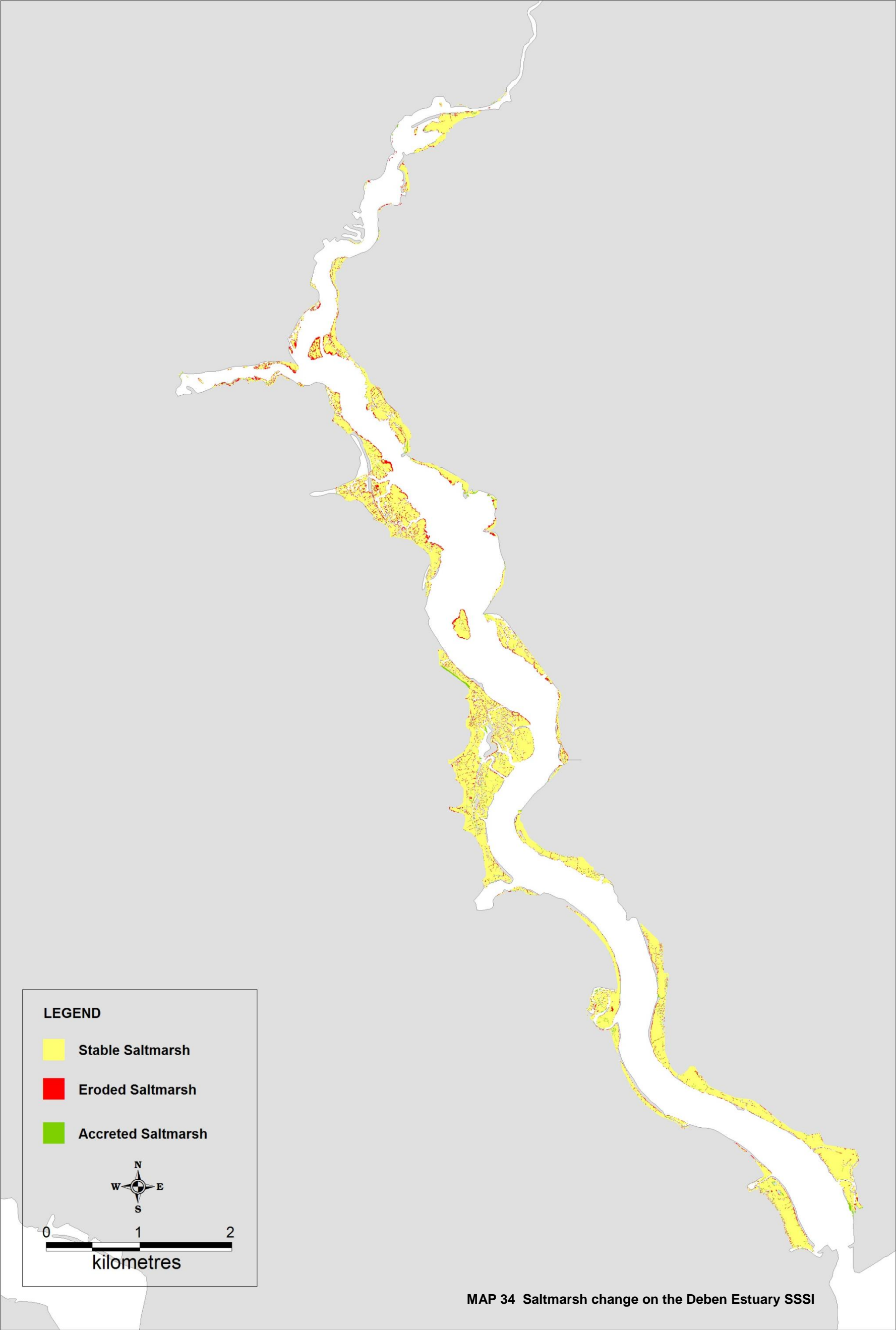


Map 31 – Units 12, 13 & 21 on the Orwell SSSI



Map 32 – Units 15 & 16 on the Orwell SSSI





MAP 34 Saltmarsh change on the Deben Estuary SSSI

